

TUSKEGEE, ALABAMA

AL-509 (FAA)

23222

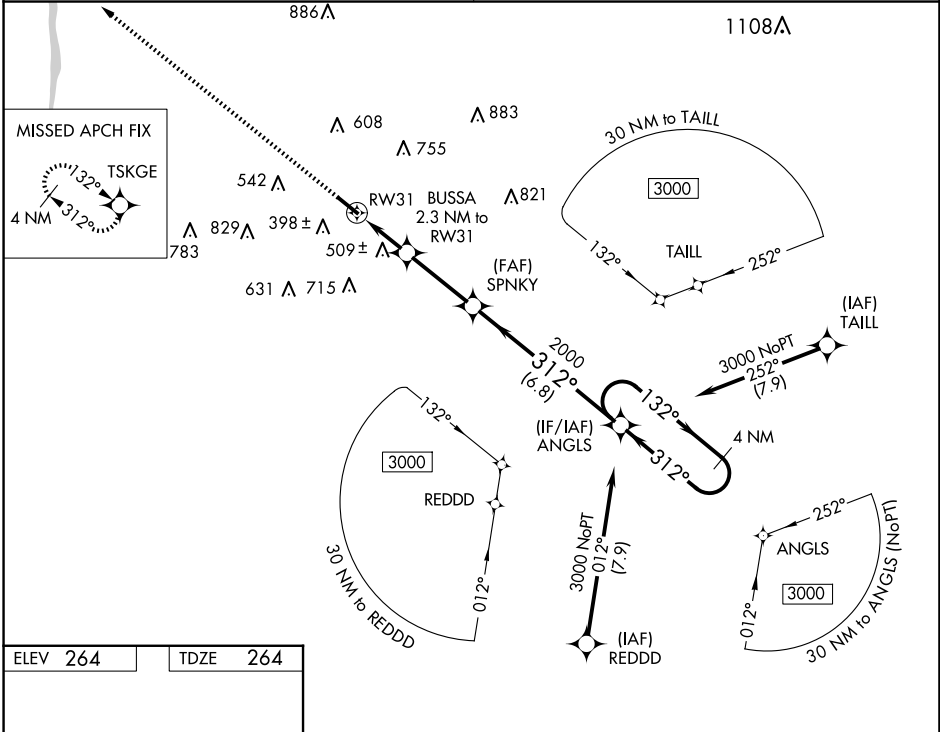
WAAS CH 97425 W31A	APP CRS 312°	Rwy Idg TDZE Apt Elev	5005 264 264
--	------------------------	-----------------------------	---

RNAV (GPS) RWY 31
MOTON FLD MUNI (Ø6A)

⚠ DME/DME RNP-0.3 NA. Helicopter visibility reduction below ¾ SM NA. Baro-VNAV NA. Use Montgomery altimeter setting when not received use Troy Muni at N Kenneth Campbell Fld altimeter setting; increase all DA 18 feet and all MDA 20 feet, and increase Circling Cat B and C visibility ¼ mile.

MISSED APPROACH:
Climb to 3000 direct TSKGE and hold.

ATLANTA APP CON★ 125.5 323.1	UNICOM 122.8 (CTAF) Ø
--	---------------------------------



MIRL Rwy 13-31

3000

↑

TSKGE

✦

VGSI and RNAV glidepath not coincident (VGSI Angle 3.00/TCH 30).

4 NM Holding Pattern

*LNAV only

BUSSA 2.3 NM to RW31

SPNKY 2000

ANGLS

132° →

← 312°

3000

GP 3.00° TCH 40

RW31

*1020

2000

2.3 NM

3 NM

6.8 NM

CATEGORY	A	B	C	D
LPV DA	627-1¼		363 (400-1¼)	
LNAV/VNAV DA	909-2½		645 (700-2½)	
LNAV MDA	860-1	596 (600-1)	860-1¼	596 (600-1¼)
CIRCLING	960-1 696 (700-1)	1060-1 796 (800-1)	1200-2¾ 936 (1000-2¾)	1260-3 996 (1000-3)

TUSKEGEE, ALABAMA
Amdt 2B 31MAR16

32°28'N-85°41'W

RNAV (GPS) RWY 31
MOTON FLD MUNI (Ø6A)

SE-4, 07 AUG 2025 to 04 SEP 2025

SE-4, 07 AUG 2025 to 04 SEP 2025