

WAAS CH 99324 W06A	APP CRS 061°	Rwy Idg TDZE Apt Elev	5501 1084 1084
--	------------------------	-----------------------------	---

RNAV (GPS) RWY 6

TULLAHOMA RGNL/WM NORTHERN FLD (THA)

RNP APCH - GPS.

▼

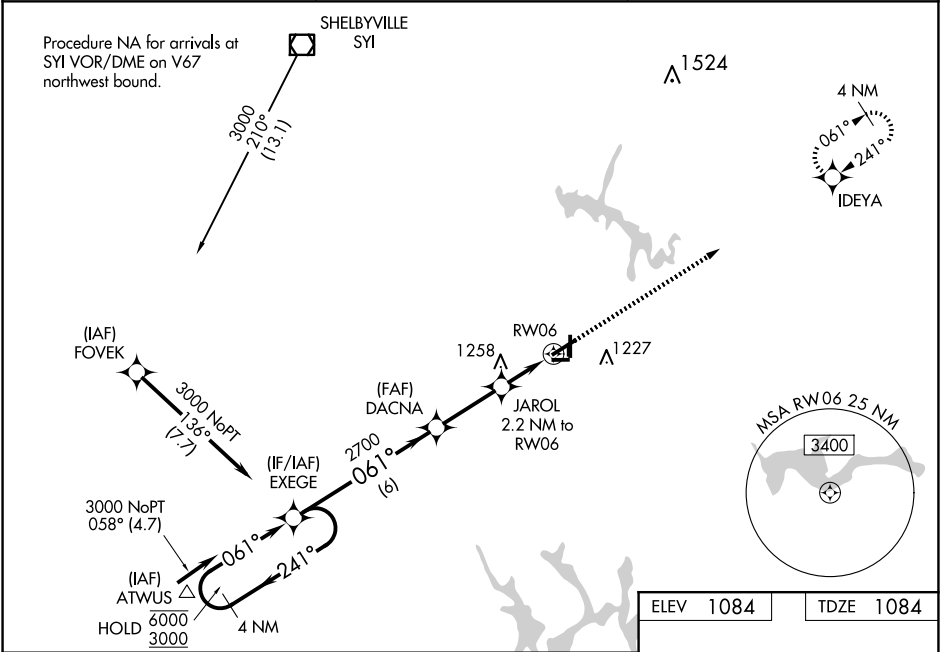
▲

Circling NA to Rwys 9 and 27. Circling to Rwy 18 and 36 NA at night. Rwy 6 helicopter visibility reduction below ¾ SM NA. Inop table does not apply to LPV all Cats and LNAV Cat A/B. For uncompensated Baro-VNAV systems, LNAV/VNAV NA below -17°C or above 54°C. For inop ALS increase LNAV/VNAV Cat C/D visibility to 1½ SM.

ODALS

MISSED APPROACH:
Climb to 3500 direct
IDEYA and hold.

AWOS-3 128.325	MEMPHIS CENTER 128.15 323.125	UNICOM 123.0 (CTAF) 0
--------------------------	---	---------------------------------



4 NM Holding Pattern		EXEGE	DACNA	JAROL 2.2 NM to RW06	1.2 NM to RW06	RW06	3500 IDEYA
6000 3000		241°	061°	061°	2700	1820	
GP 3.00° TCH 41		6 NM 2.8 NM 1 NM 1.2 NM					
CATEGORY	A	B	C	D			
LPV DA	1334-1		250 (300-1)				
LNAV/VNAV DA	1525-1 ⅛		441 (500-1 ⅛)				
LNAV MDA	1500-1		416 (500-1)				
CIRCLING	1540-1 456 (500-1)	1580-1 496 (500-1)	1620-1 ½ 536 (600-1 ½)	1640-2 556 (600-2)			

MIRL Rwys 6-24 and 18-36

REIL Rwys 6, 18, 24 and 36