

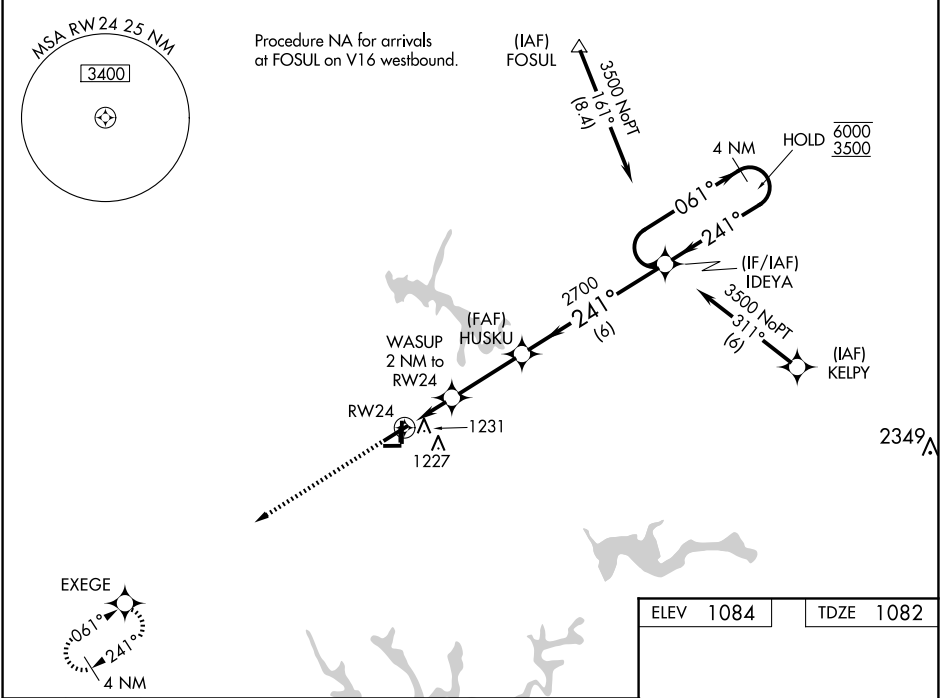
WAAS CH <b>53324</b> <b>W24A</b>	APP CRS <b>241°</b>	Rwy Idg TDZE Apt Elev	<b>5001</b> <b>1082</b> <b>1084</b>
--	------------------------	-----------------------------	---


RNAV (GPS) RWY 24

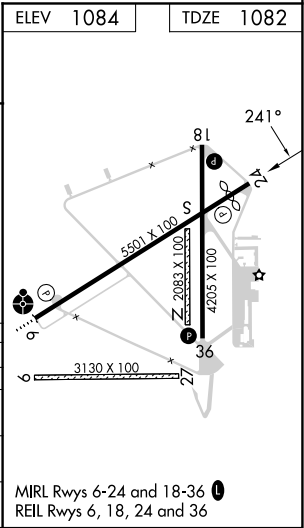
TULLAHOMA RGNL/WM NORTHERN FLD (THA)

RNP APCH - GPS.		MISSED APPROACH: Climb to 3000 direct EXEGE and hold.
<div><div></div><div>Procedure NA for arrivals at FOSUL on V16 westbound.</div></div> <div><div></div><div>Circle NA to Rwy 9 and 27. Circle Rwy 18 and 36 NA at night. Rwy 24 helicopter visibility reduction below 3/4 SM NA. For uncompensated Baro-VNAV systems, LNAV/VNAV NA below -17°C or above 37°C.</div></div>		

AWOS-3 <b>128.325</b>	MEMPHIS CENTER <b>128.15 323.125</b>	UNICOM <b>123.0 (CTAF) 0</b>
--------------------------	---	---------------------------------



3000 ↑		EXEGE 		VGSI and RNAV glidepath not coincident (VGSI Angle 3.00/TCH 33).		4 NM Holding Pattern	



SE-1, 07 AUG 2025 to 04 SEP 2025

SE-1, 07 AUG 2025 to 04 SEP 2025