

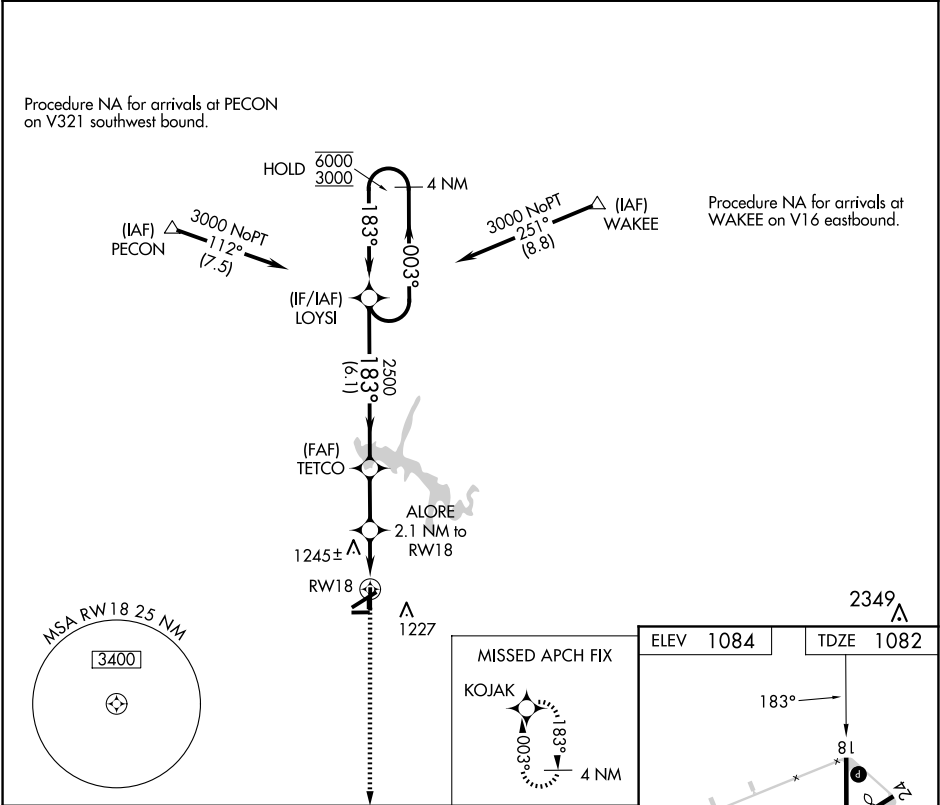
APP CRS	Rwy Idg	4205
183°	TDZE	1082
	Apt Elev	1084

RNAV (GPS) RWY 18

TULLAHOMA RGNL/WM NORTHERN FLD (THA)

RNP APCH - GPS.		MISSED APPROACH: Climb to 3400 direct KOJAK and hold.
	Rwy 18 helicopter visibility reduction below 1 SM NA. Circling NA to Rwy 9 and 27. Straight-in Rwy 18 NA at night, Circling Rwy 18, 36 NA at night.	

AWOS-3 128.325	MEMPHIS CENTER 128.15 323.125	UNICOM 123.0 (CTAF)
-------------------	----------------------------------	------------------------



4 NM Holding Pattern		VGSI and descent angle not coincident (VGSI Angle 2.95/TCH 34).		3400	KOJAK
6000 3000		2500		RW18	
6.1 NM		2.2 NM		2.1 NM	
CATEGORY	A	B	C	D	
LNNAV MDA	1500-1	418 (500-1)	1500-1½	418 (500-1½)	
CIRCLING	1540-1 456 (500-1)	1580-1 496 (500-1)	1620-1½ 536 (600-1½)	1640-2 556 (600-2)	MIRL Rwy 6-24 and 18-36 REIL Rwy 6, 18, 24 and 36

SE-1, 07 AUG 2025 to 04 SEP 2025

SE-1, 07 AUG 2025 to 04 SEP 2025