

WAAS CH 90337 W34A	APP CRS 343°	Rwy Idg TDZE Apt Elev	8203 7280 7289
--	------------------------	-----------------------------	---

RNAV (GPS) RWY 34

KEMMERER MUNI (EMM)

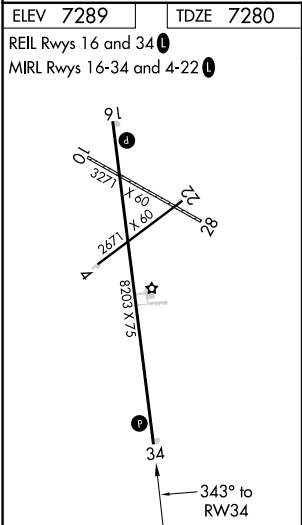
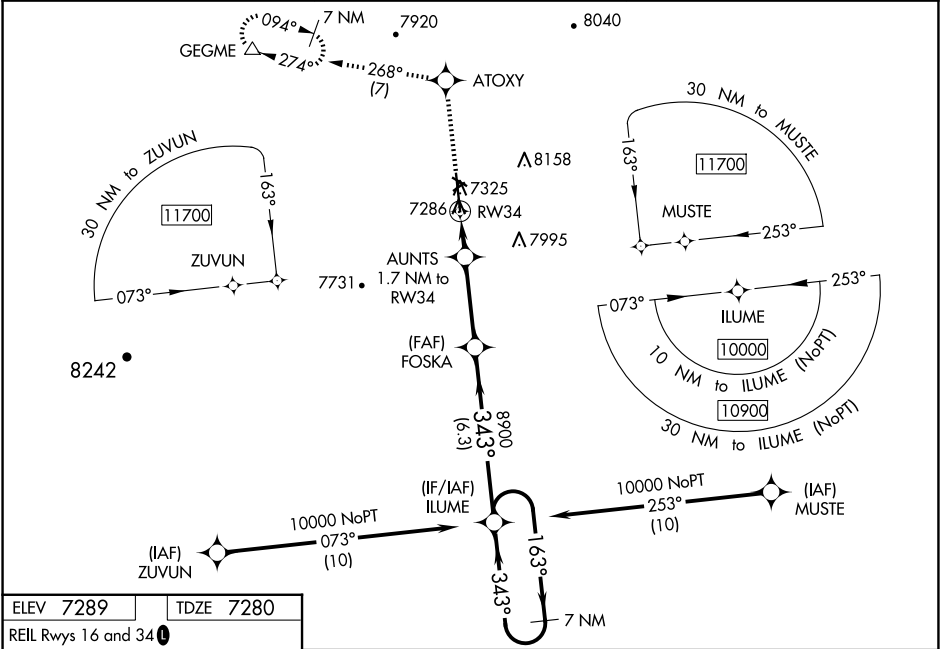
▼

▲

Baro-VNAV and VDP NA when using Evanston altimeter setting.
For uncompensated Baro-VNAV systems, LNAV/VNAV NA below -27°C (-16°F) or above 54°C (130°F). DME/DME RNP-0.3 NA.
Night landing: Rwy 4, 10, 22, 28 NA. When local altimeter setting not received, use Evanston altimeter setting: increase all DA 111 feet and visibilities 1/8 mile; increase all MDA 120 feet.

MISSED APPROACH: Climb to 12000
direct ATOXY and on track 268°
direct GEGME and hold, continue
climb-in-hold to 12000.

AWOS-3PT 119.675	SALT LAKE CITY CENTER 124.35 353.5	UNICOM 122.8 (CTAF) 0 *
----------------------------	--	-----------------------------------



12000	ATOXY	fr 268°	GEGME	VGSI and RNAV glidepath not coincident (VGSI Angle 3.25/TCH 61).	7 NM Holding Pattern
*LNAV only.	AUNTS 1.7 NM to RW34	FOSKA	ILUME	10000	GP 3.00° TCH 60
0.6 NM to RW34	7860	8900	163°	343°	
0.6	1.1 NM	3.3 NM	6.3 NM		
CATEGORY	A	B	C	D	
LPV DA	7530-1	250 (300-1)	NA		
LNAV/VNAV DA	7530-1	250 (300-1)	NA		
LNAV MDA	7540-1	260 (300-1)	NA		
CIRCLING	7660-1 371 (400-1)	8240-1½ 951 (1000-1½)	NA		