

| | | | |
|--|------------------------|-----------------------------|---|
| WAAS CH 56523 W12A | APP CRS 118° | Rwy Idg TDZE Apt Elev | 4400 3294 3298 |
|--|------------------------|-----------------------------|---|

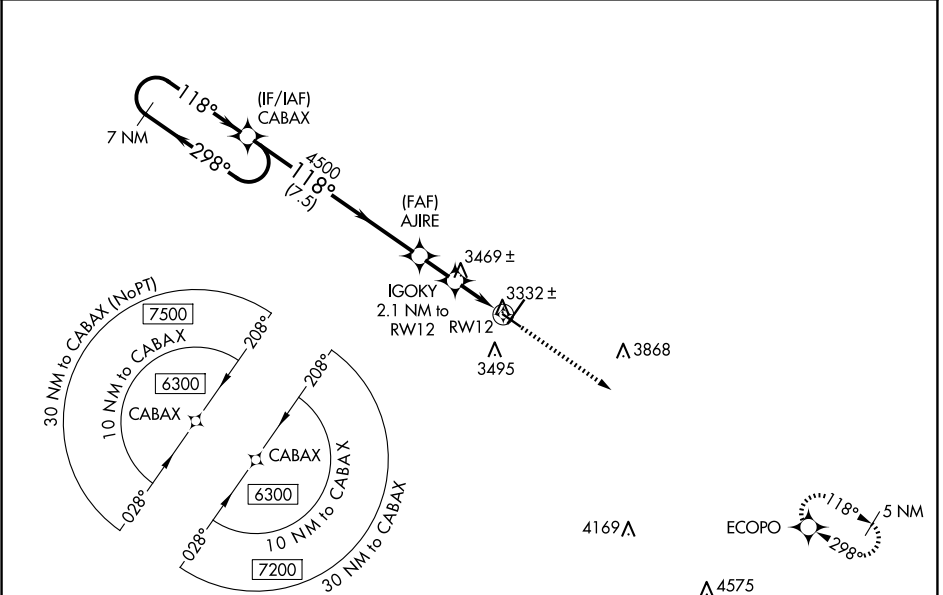
RNAV (GPS) RWY 12

CHADRON MUNI (CDR)

Baro-VNAV NA when using Pine Ridge altimeter setting. For uncompensated Baro-VNAV systems, LNAV/VNAV NA below -21°C (-5°F) or above 54°C (130°F). DME/DME RNP-0.3 NA. When local altimeter setting not received, use Pine Ridge altimeter setting and increase all DA 70 feet and all MDA 80 feet; increase LPV all Cats visibility ½ mile, LNAV/VNAV all Cats visibility ¼ mile, and Circling Cat C visibility ¼ mile.

MISSED APPROACH:
Climb to 5900 direct
ECOPO and hold.

| | | |
|-----------------------|--------------------------------------|---------------------------------|
| ASOS 118.05 | DENVER CENTER 127.95 338.2 | UNICOM 122.8 (CTAF) 0 |
|-----------------------|--------------------------------------|---------------------------------|



| | | | | | |
|---|--------------------|--------------------|----------------------|----|---|
| 5017 MSL 4700± MSL | | | | | ELEV 3298 D TDZE 3294 |
| 7 NM Holding Pattern VGSI and RNAV glidepath not coincident (VGSI Angle 3.00/TCH 29). | | | | | ECOPO |
| 6300 ← 298° 118° → 4500 118° → 4000 *RNAV only | | | | | |
| GP 3.00° TCH 42 7.5 NM 1.6 NM 2.1 NM RW12 | | | | | |
| CATEGORY | A | B | C | D | |
| LPV DA | 3544-1 | 250 (300-1) | | NA | |
| LNAV/VNAV DA | 3719-1½ | 425 (500-1½) | | NA | |
| LNAV MDA | 3720-1 | 426 (500-1) | 3720-1¼ 426 (500-1¼) | NA | |
| CIRCLING | 3820-1 522 (600-1) | 3920-1 622 (700-1) | 3920-1¾ 622 (700-1¾) | NA | |
| | | | | | HIRL Rwy 3-21 0 MIRL Rwy 12-30 0 REIL Rwy 21 and 30 0 |