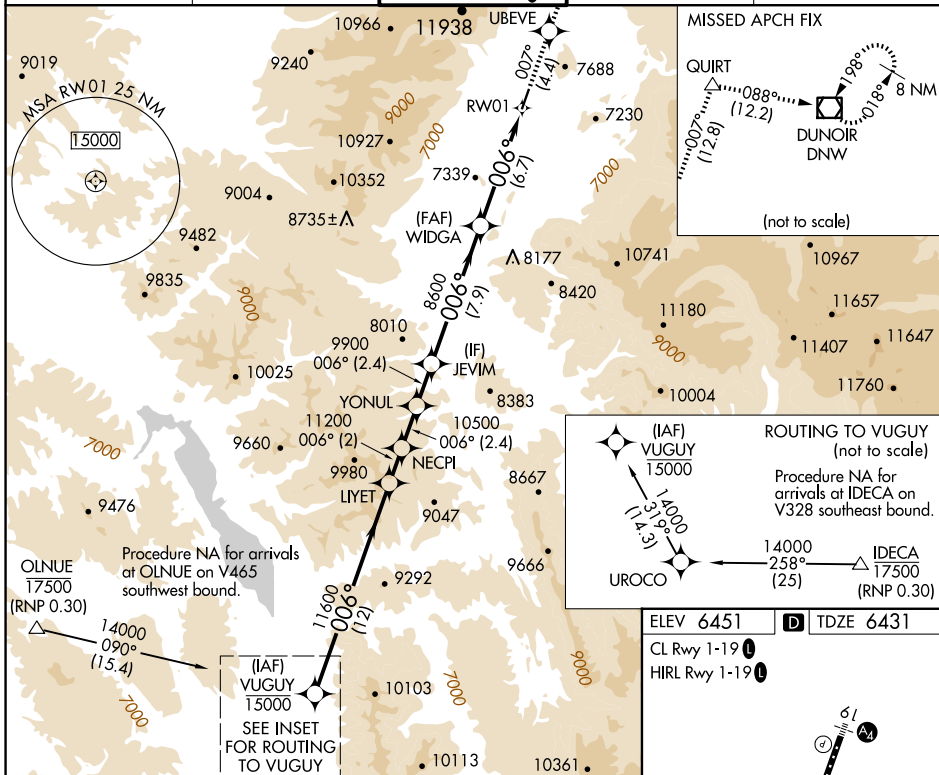
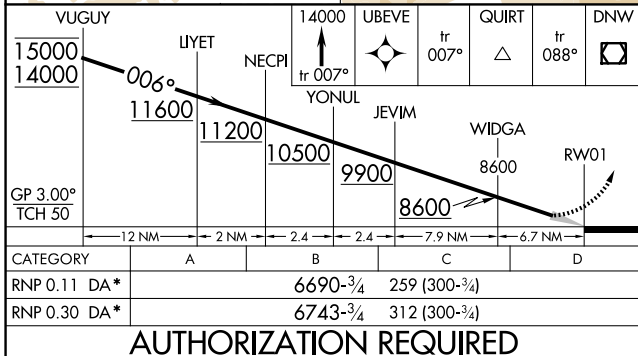


25163

RNAV (RNP) Z RWY 1
JACKSON HOLE (JAC)

T For uncompensated Baro-VNAV systems, procedure NA below -27°C or above 54°C.
❄ -22°C Inop table does not apply to RNP 0.11* all Cats visibility.
 For inop ALS, increase RNP 0.30* all Cats visibility to ¾ SM.
 Missed approach requires RNP less than 1.0.

* Missed approach requires minimum climb of 330 feet per NM to 8200; if unable to meet climb gradient, see RNAV (RNP) Y RWY 1.

UNICOM
122.95HIRL Rwy 1-19 **L**

AUTHORIZATION REQUIRED

JACKSON HOLE (JAC)
RNAV (RNP) Z RWY 1

NW-1, 07 AUG 2025 to 04 SEP 2025