

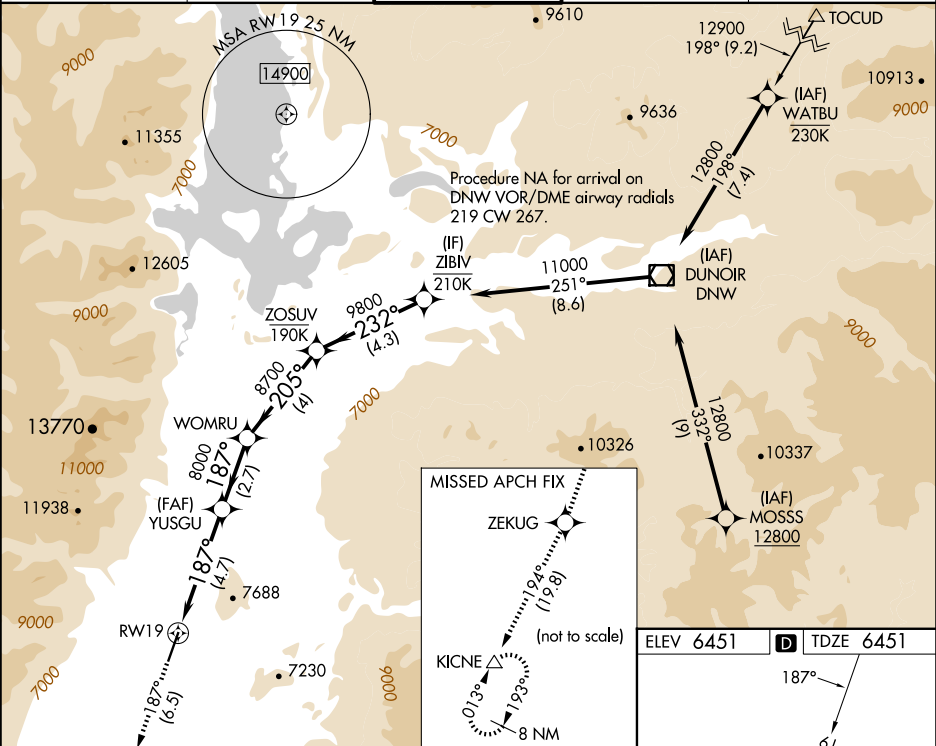
APP CRS	Rwy Ldg	6300
187°	TDZE	6451
	Apt Elev	6451

RNAV (RNP) Y RWY 19

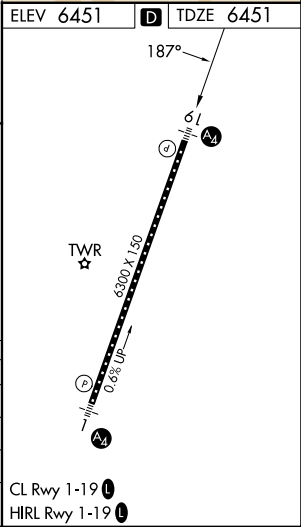
JACKSON HOLE (JAC)

RNP AR APCH-GPS.	MALS	MISSED APPROACH: Climb to 14000 on track 187° to ZEKUG and on track 194° to KICNE and hold, continue climb-in-hold to 14000. *Missed approach requires minimum climb of 226 feet per NM to 11400. #Missed approach requires minimum climb of 210 feet per NM to 11600.
▼ -22°C	☯	

D-ATIS	SALT LAKE CENTER	JACKSON TOWER*	GND CON	UNICOM
120.625	133.25 285.6	118.075 (CTAF) ①	124.55	122.95



14000	ZEKUG	KICNE	WOMRU	ZOSUV	ZIBIV
tr 187°	☯	tr 194°	△		
			YUSGU		
	8000	8000	8700	9800	11000
	187°	205°	232°		
	4.7 NM	2.7 NM	4 NM	4.3 NM	
CATEGORY	A	B	C	D	
RNP 0.11 DA*		6781/40	330 (400-¾)		
RNP 0.30 DA#		6935/60	484 (500-1¼)		
RNP 0.30 DA		7038-1⅓	587 (600-1⅓)		
AUTHORIZATION REQUIRED					



NW-1, 07 AUG 2025 to 04 SEP 2025

NW-1, 07 AUG 2025 to 04 SEP 2025