

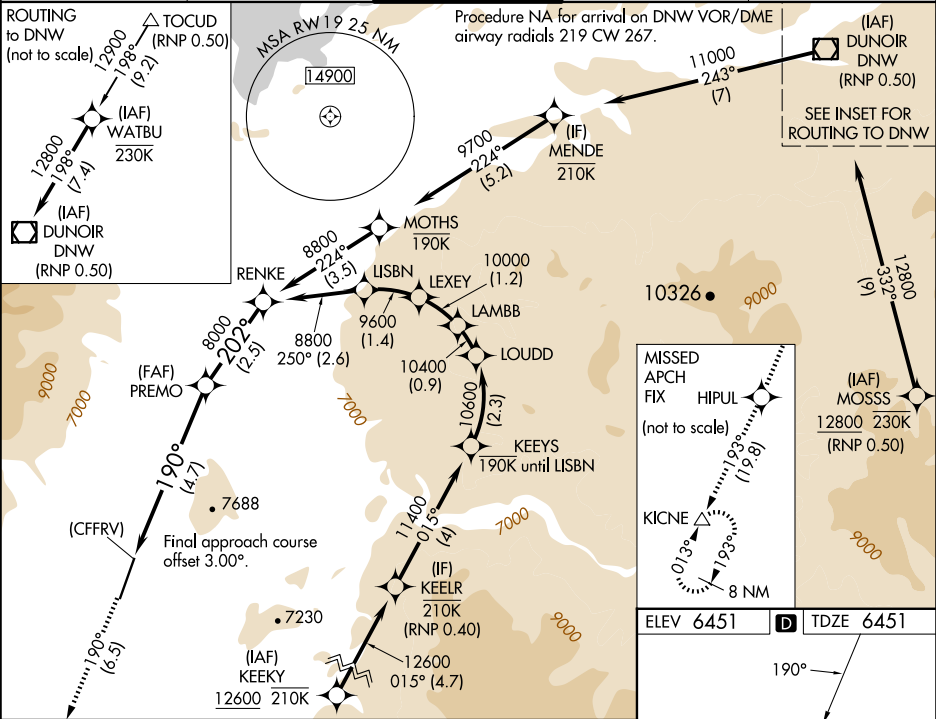
APP CRS	Rwy Ldg	6300
190°	TDZE	6451
	Apt Elev	6451

RNAV (RNP) X RWY 19

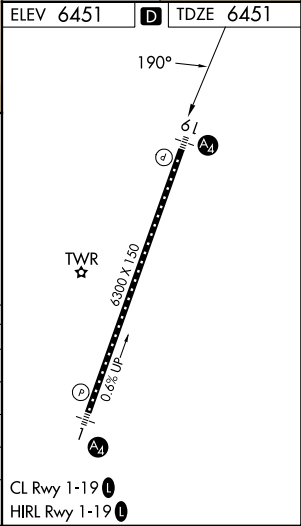
JACKSON HOLE (JAC)

RNP AR APCH-GPS.	MALS	MISSED APPROACH: Climb to 14000 on track 190° to HIPUL and on track 193° to KICNE and hold, continue climb-in-hold to 14000. *Missed approach requires minimum climb of 226 feet per NM to 11600. #Missed approach requires minimum climb of 215 feet per NM to 11600.
▼ -22°C For uncompensated Baro-VNAV systems, procedure NA below -27°C or above 54°C. For inop ALS, increase RNP 0.20# all Cats visibility to RVR 6000. For inop ALS, increase RNP 0.30 all Cats visibility to 1 1/4 SM.	42	

D-ATIS 120.625	SALT LAKE CENTER 133.25 285.6	JACKSON TOWER★ 118.075 (CTAF) 0	GND CON 124.55	UNICOM 122.95
-------------------	----------------------------------	------------------------------------	-------------------	------------------



14000 ↑ tr 190°	HIPUL ✦ tr 193°	KICNE △	PREMO 8000		RENKE 8800
See planview for multiple IF locations.					
CATEGORY	A	B	C	D	
RNP 0.10 DA*	6777/40		326 (400-¾)		
RNP 0.20 DA#	6856/50		405 (500-1)		
RNP 0.30 DA#	6938/60		487 (500-1¼)		
RNP 0.30 DA	7045-1⅜		594 (600-1⅝)		
AUTHORIZATION REQUIRED					



NW-1, 07 AUG 2025 to 04 SEP 2025

NW-1, 07 AUG 2025 to 04 SEP 2025