


LOC/DME I-JAC <u>109.1</u> Chan 28	APP CRS 187°	Rwy Ldg 6300 TDZE 6451 Apt Elev 6451
--	------------------------	---

ILS Y or LOC Y RWY 19
JACKSON HOLE (JAC)

RADAR required for procedure entry at MOSSS.

 Circling NA for Cats A, B and C east of Rwy 1-19. Circling NA for Cat D. For inop ALS, increase SOSUE fix minimums S-LOC 19 Cats C and D visibility to 2½ SM. For inop ALS, increase S-LOC Cat C and D visibility to 3 SM.

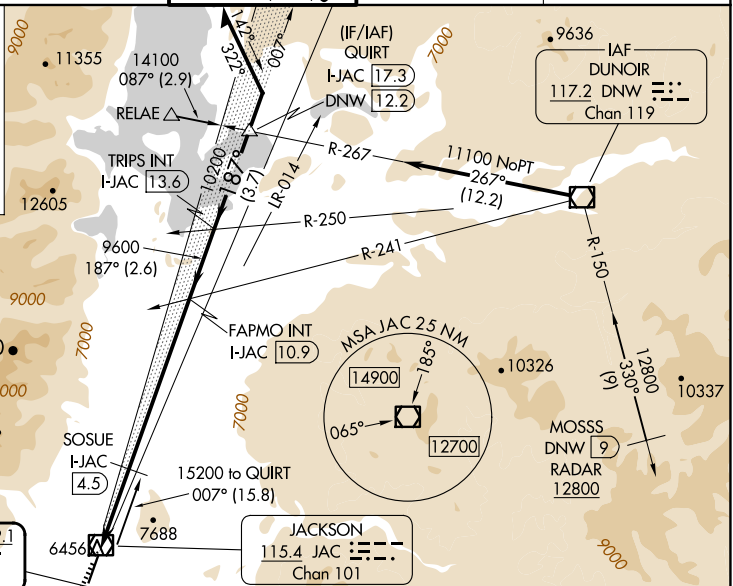
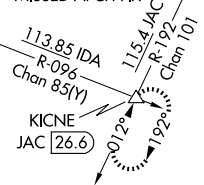
MALS



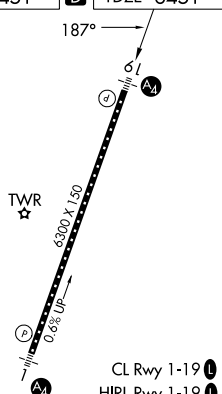
MISSED APPROACH: Climb to 14000 on JAC VOR/DME R-192 to KICNE INT/JAC VOR/DME 26.6 DME and hold, continue climb-in-hold to 14000.

D-ATIS 120.625	SALT LAKE CENTER 133.25 285.6	JACKSON TOWER ★ 118.075 (CTAF) 0	GND CON 124.55	UNICOM 122.95
--------------------------	---	--	--------------------------	-------------------------

MISSED APCH FIX



FILEV 6451		TD7E 6451
------------	---	-----------

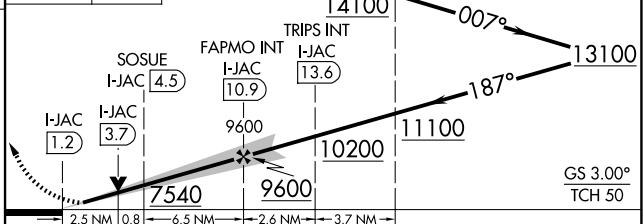


JAC R-192

Use I-JAC DME when
on the localizer course.

QUIRT
-IAC 17

Remain
within 10 NM



CATEGORY	A	B	C	D
S-ILS 19	7077-1½ 626 (700-1½)			
S-LOC 19	7540/55 1089 (1100-1)	7540-1¼ 1089 (1100-1¼)	7540-2½ 1089 (1100-2½)	
C CIRCLING	7540-1¼ 1089 (1100-1¼)	7540-1½ 1089 (1100-1½)	7540-3 1089 (1100-3)	NA
SOSUE FIX MINIMUMS (DME REQUIRED)				
S-LOC 19	7300/40 849 (900-¾)	7300/55 849 (900-1)	7300-2 849 (900-2)	
C CIRCLING	7300-1¼ 849 (900-1¼)		7400-2¾ 949 (1000-2¾)	NA