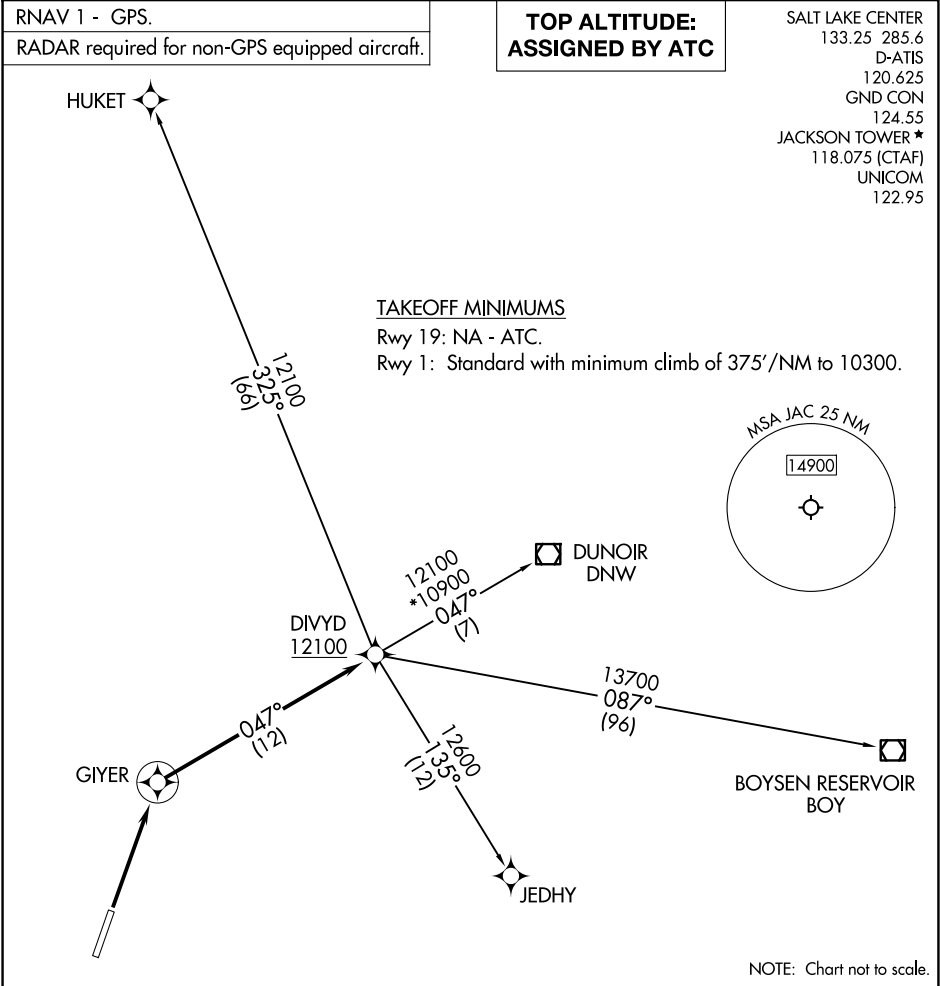


(DIVYD2.DIVYD) 24025

DIVYD TWO DEPARTURE (RNAV)

AL-504 (FAA)

JACKSON HOLE (JAC)  
JACKSON, WYOMING



▼

DEPARTURE ROUTE DESCRIPTION

TAKEOFF RUNWAY 1: Climb direct GIYER, then on track 047° to cross DIVYD at or above 12100, thence. . . .

. . . . (transition). Maintain ATC assigned altitude, expect filed altitude 10 minutes after departure.

BOYSEN RESERVOIR TRANSITION (DIVYD2.BOY)

DUNOIR TRANSITION (DIVYD2.DNW)

HUKET TRANSITION (DIVYD2.HUKET)

JEDHY TRANSITION (DIVYD2.JEDHY)