

WAAS CH 49122 W32A	APP CRS 323°	Rwy Idg TDZE 5056 716 Apt Elev 716
--	------------------------	--

RNAV (GPS) RWY 32

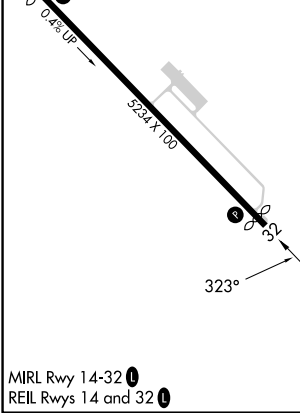
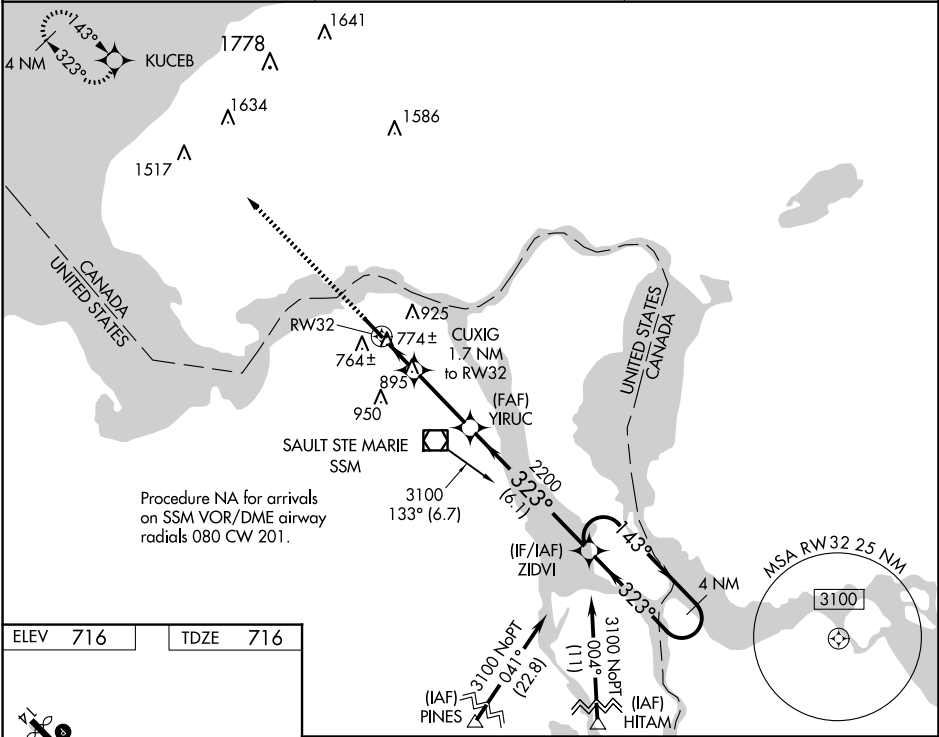
SAULT STE MARIE MUNI/SANDERSON FLD (A.NJ)

RNP APCH.

Rwy 32 helicopter visibility reduction below ¾ SM NA. When local altimeter setting not received, use Chippewa County Intl altimeter setting and increase all MDA 60 feet, and increase LP Cat C visibility ⅛ mile and LNAV Cat C visibility ¼ mile.

MISSED APPROACH: Climb to 2800 direct KUCEB and hold.

ASOS 118.375	TORONTO CENTER 132.65 344.5	UNICOM 122.7 (CTAF) 0
------------------------	---------------------------------------	---------------------------------



2800	KUCEB	YIRUC	ZIDVI	4 NM Holding Pattern
		CUXIG 1.7 NM to RW32		
		3.00° TCH 30		
		1280	2200	3100
		1.7 NM	2.9 NM	6.1 NM
CATEGORY	A	B	C	D
LP MDA	1040-1	324 (400-1)		NA
LNAV MDA	1200-1	484 (500-1)	1200-1 ¾ 484 (500-1 ¾)	NA
CIRCLING	1280-1	564 (600-1)	1320-1 ¾ 604 (700-1 ¾)	NA