

WAAS CH 70622 W14A	APP CRS 143°	Rwy Idg 5054 TDZE 712 Apt Elev 716
--	------------------------	---

RNAV (GPS) RWY 14

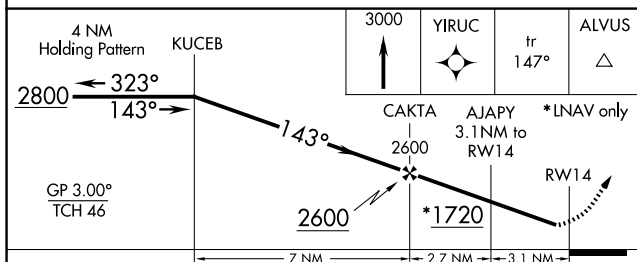
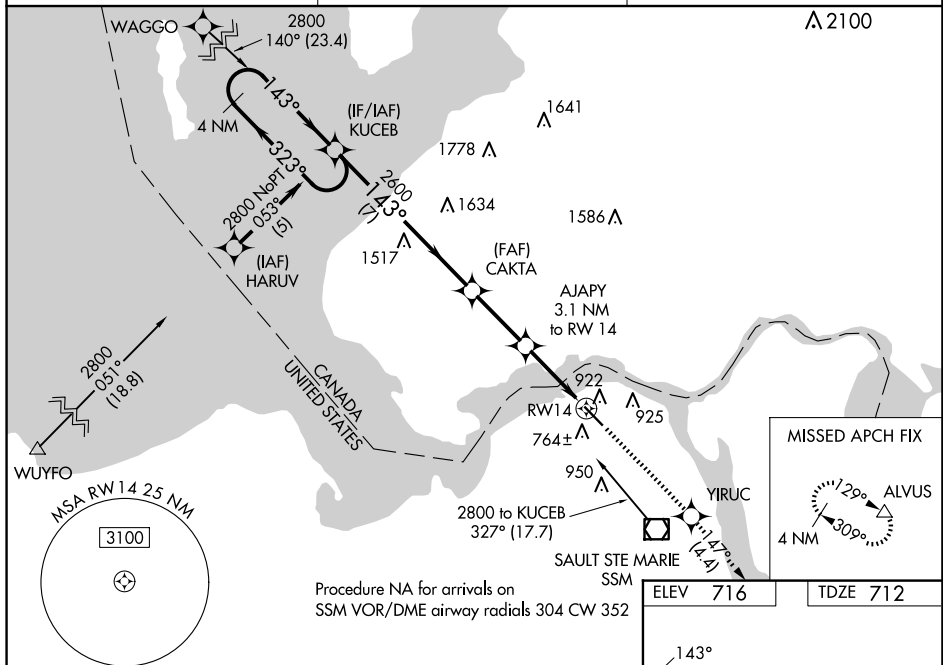
SAULT STE MARIE MUNI/SANDERSON FLD (ANJ)

RNP APCH.

- T** For uncompensated Baro-VNAV systems, LNAV/VNAV NA below -16°C or above 54°C.
- A** Rwy 14 helicopter visibility reduction below $\frac{3}{4}$ SM NA. When local altimeter setting not received, use Chippewa County Intl altimeter setting and increase all DA 45 feet and all MDA 60 feet. Increase LNAV/VNAV all Cats visibilities to 1 $\frac{1}{4}$ mile and LNAV Cat C visibility to 1 $\frac{3}{4}$ mile.

MISSED APPROACH:
Climb to 3000 direct
YIRUC and on track
147° to ALVUS and hold.

ASOS 118,375	TORONTO CENTER 132.65 344.5	UNICOM 122.7 (CTAF) 0
------------------------	---------------------------------------	---------------------------------



CATEGORY	A	B	C	D
LPV DA	962-1 250 (300-1)			NA
LNAV/ VNAV DA	1137-1 $\frac{3}{8}$ 425 (500-1 $\frac{3}{8}$)			NA
LNAV MDA	1240-1	528 (600-1)	1240-1 $\frac{5}{8}$ 528 (600-1 $\frac{5}{8}$)	NA

