

WAAS CH 72932 W08A	APP CRS 081°	Rwy Idg TDZE 589 Apt Elev 595
--	------------------------	---

RNAV (GPS) RWY 8
SAN MARCOS RGNL (HYI)

RNP APCH.

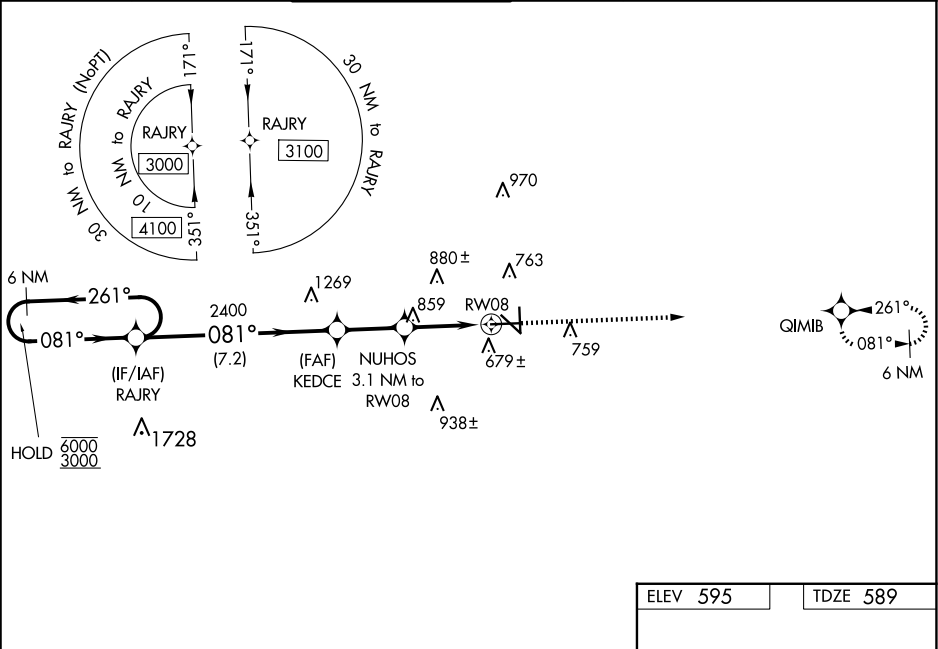
▼

⚠

Circling NA for Cat E SW of Rwy 13-31. Rwy 8 helicopter visibility reduction below 3/4 SM NA. Baro-VNAV NA when using New Braunfels altimeter setting. For uncompensated Baro-VNAV systems, LNAV/VNAV NA below -16°C or above 54°C. VDP NA with New Braunfels altimeter setting. When local altimeter setting not received, use New Braunfels altimeter setting and increase LPV DA to 882, LNAV/VNAV DA to 953 and increase all MDA 60 feet; increase LNAV Cat C/D/E and Circling Cat C/D visibility 1/4 SM.

MISSED APPROACH:
Climb to 3000 direct QIMB and hold.

ATIS 120.825	AUSTIN APP CON 119.0 370.85	SAN MARCOS TOWER★ 126.825 (CTAF) 0	GND CON 120.125	CLNC DEL 120.125	CLNC DEL 121.35 (when twr closed)
------------------------	---------------------------------------	---	---------------------------	----------------------------	--



6 NM Holding Pattern

RAJRY

KEDCE

NUHOS

RWY 08

6000

3000

GP 3.00°

TCH 55

261°

081°

081°

2400

*1620

7.2 NM

2.4 NM

1.6 NM

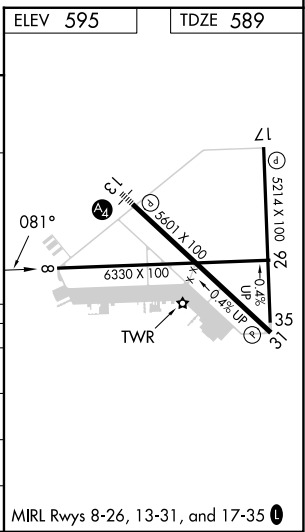
1.5 NM

3000

QIMB

*LNAV only.

CATEGORY	A	B	C	D	E
LPV DA	839-1 250 (300-1)				
LNAV/VNAV DA	910-1 321 (400-1)				
LNAV MDA	1120-1 531 (600-1)	1120-1½ 531 (600-1½)			
CIRCLING	1120-1 525 (600-1)	1240-1¾ 645 (700-1¾)	1320-2¼ 725 (800-2¼)	1340-2¾ 745 (800-2¾)	



SC-3, 07 AUG 2025 to 04 SEP 2025

SC-3, 07 AUG 2025 to 04 SEP 2025