

WAAS CH 70632 W35A	APP CRS 351°	Rwy ldg TDZE 583 Apt Elev 595
--	------------------------	---

RNAV (GPS) RWY 35

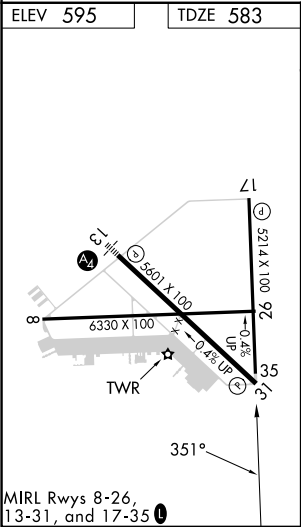
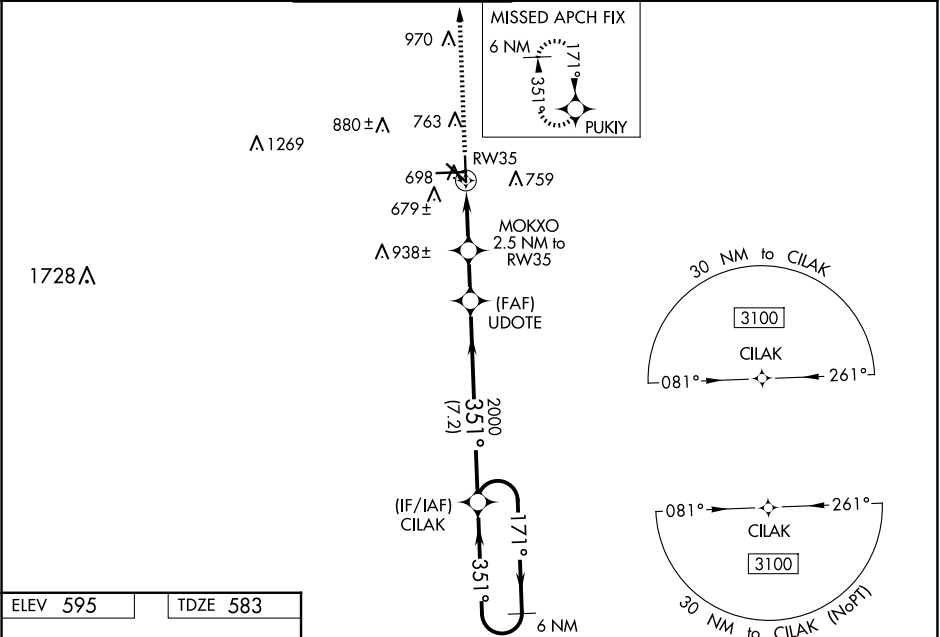
SAN MARCOS RGNL (HYI)

⚠

Baro-VNAV NA when using New Braunfels altimeter setting. For uncompensated Baro-VNAV systems, LNAV/VNAV NA below -16°C (3°F) or above 54°C (130°F). When local altimeter setting not received, use New Braunfels altimeter setting and increase all DA 43 feet and all MDA 60 feet; increase LPV all Cats and LNAV/VNAV all Cats visibility ½ mile; and increase LNAV Cat C/D/E visibility and Circling Cat C/D visibility ¼. Circling NA for Cat E SW of Rwy 13-31. DME/DME RNP-0.3 NA. VDP NA with New Braunfels altimeter setting.

MISSED APPROACH:
Climb to 3100 direct PUKIY and hold.

ATIS 120.825	AUSTIN APP CON 119.0 370.85	SAN MARCOS TOWER ★ 126.825 (CTAF) 0	GND CON 120.125	CLNC DEL 120.125	CLNC DEL 121.35 (when twr closed)
------------------------	---------------------------------------	--	---------------------------	----------------------------	--



MIRL Rwy 8-26, 13-31, and 17-35

SAN MARCOS RGNL (HYI)

RNAV (GPS) RWY 35

SC-3, 07 AUG 2025 to 04 SEP 2025

SC-3, 07 AUG 2025 to 04 SEP 2025