

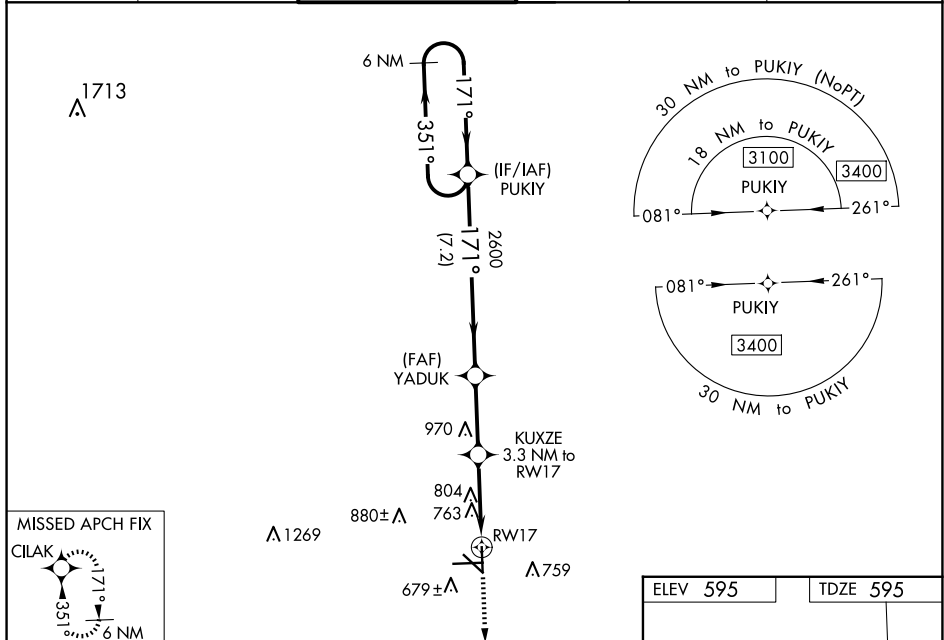
|  |                        |   |
|--|------------------------|---|
| WAAS<br>CH <b>77832</b><br><b>W17A</b> | APP CRS<br><b>171°</b> | Rwy Idg <b>5214</b><br>TDZE <b>595</b><br>Apt Elev <b>595</b> |
|--|------------------------|---|

RNAV (GPS) RWY 17  
SAN MARCOS RGNL (HYI)

**⚠** Baro-VNAV NA when using New Braunfels altimeter setting. For uncompensated Baro-VNAV systems, LNAV/VNAV NA below -16°C (3°F) or above 54°C (130°F). When local altimeter setting not received, use New Braunfels altimeter setting and increase all DA 43 feet and all MDA 60 feet; increase LPV all Cats and Circling Cat C/D visibility  $\frac{1}{4}$  mile; increase LNAV/VNAV all Cats and LNAV Cat C/D/E visibility  $\frac{1}{8}$  mile. Circling NA for Cat E SW of Rwy 13-31. DME/DME RNP-0.3 NA. VDP NA with New Braunfels altimeter setting. Helicopter visibility reduction below  $\frac{3}{4}$  SM NA.

**MISSED APPROACH.**  
Climb to 3100 direct  
CLAK and hold.

|                        |                                       |   |                           |                            |  |
|------------------------|---------------------------------------|---|---------------------------|----------------------------|--|
| ATIS<br><b>120.825</b> | AUSTIN APP CON<br><b>119.0 370.85</b> | SAN MARCOS TOWER★<br><b>126.825</b> (CTAF) <b>0</b> | GND CON<br><b>120.125</b> | CLNC DEL<br><b>120.125</b> | CLNC DEL<br><b>121.35</b><br>(when twr closed) |
|------------------------|---------------------------------------|---|---------------------------|----------------------------|--|



6 NM Holding Pattern

3100

351°

171°

GP 3.00° TCH 55

2600

1700

7.2 NM

2.8 NM

2 NM

1.3 NM

3100

CILAK

\*LNAV only.

\*1.3 NM to RW17

RW17

