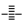

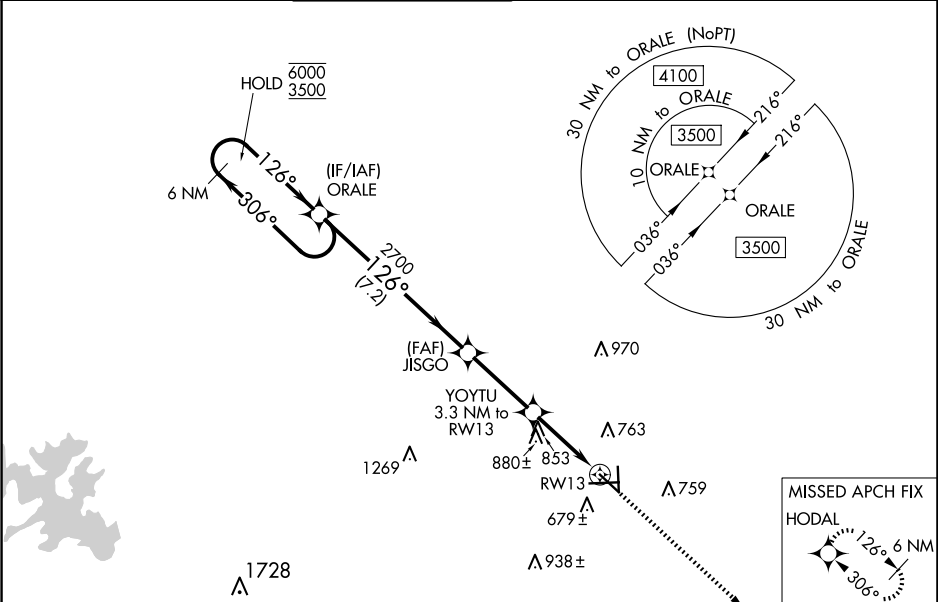


WAAS CH 86232 W13A	APP CRS 126°	Rwy Idg 5601 TDZE 593 Apt Elev 595
--	------------------------	---

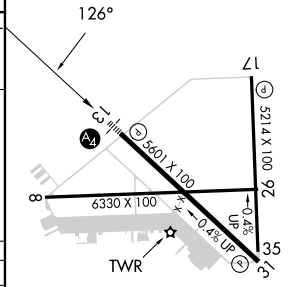
RNAV (GPS) RWY 13
SAN MARCOS RGNL (HYI)

RNP APCH-GPS. ⚠ Circling NA for Cat E southwest of Rwy 13-31. Inop table does not apply to LPV all Cats. ⚠ For uncompensated Baro-VNAV systems, LNAV/VNAV NA below -16°C or above 54°C. For inop ALS, increase LNAV/VNAV Cat E visibility to 1 SM and LNAV Cat E visibility to 1½ SM.				MALS  	MISSED APPROACH: Climb to 3000 direct HODAL and hold.
ATIS 120.825	AUSTIN APP CON 119.0 370.85	SAN MARCOS TOWER★ 126.825 (CTAF) 0	GND CON 120.125	CLNC DEL 120.125	CLNC DEL 121.35 (when twr closed)



6 NM Holding Pattern		ORALE		JISGO		YOYTU 3.3 NM to RW13		1.5 NM to RW13		RW13	
6000 ← 306°		3500 → 126°		2700		1700		1700		1700	
GP 3.00°		TCH 57		7.2 NM		3.1 NM		1.8 NM		1.5 NM	
CATEGORY	A	B	C	D	E						
LPV DA	793-¾		200 (200-¾)								
LNAV/VNAV DA	946-¾		353 (400-¾)								
LNAV MDA	1120-¾	527 (600-¾)	1120-1¼		527 (600-1¼)						
CIRCLING	1120-1	525 (600-1)	1240-1¾		1320-2¼		1340-2¾		645 (700-1¾) 725 (800-2¼) 745 (800-2¾)		

ELEV 595 TDZE 593



MIRL Rwys 8-26, 13-31, and 17-35