

WAAS CH <b>86607</b> <b>W35A</b>	APP CRS <b>353°</b>	Rwy Idg TDZE Apt Elev	<b>5500</b> <b>1946</b> <b>1953</b>
--	------------------------	-----------------------------	---

RNAV (GPS) RWY 35

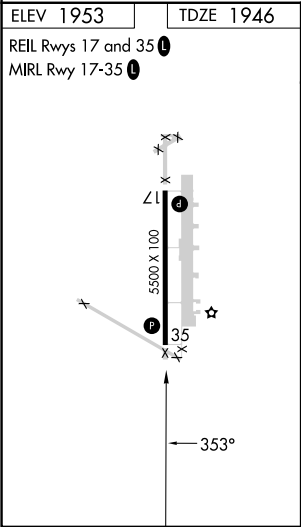
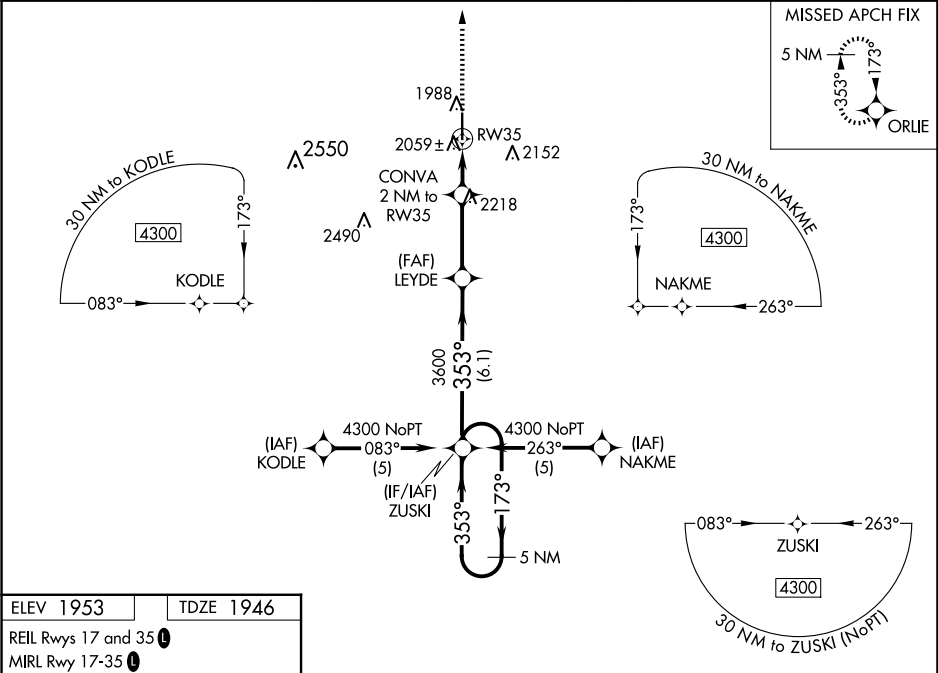
PRATT RGNL (P'TT)

⚠

For uncompensated Baro-VNAV systems, LNAV/VNAV NA below -18°C (0°F) or above 54°C (130°F). DME/DME RNP-0.3 NA. When local altimeter setting not received, use Great Bend altimeter setting: Increase LPV DA to 2295 feet and all visibilities ¼ SM; Increase LNAV/VNAV DA to 2421 feet and all visibilities ½ SM; Increase all MDAs 100 feet and visibility Cat C ¼ SM. Baro-VNAV and VDP NA when using Great Bend altimeter setting.

MISSED APPROACH: Climb to 4300 direct ORLIE and hold.

AWOS-3PT <b>118.725</b>	KANSAS CITY CENTER <b>118.8 322.425</b>	UNICOM <b>122.8 (CTAF) 0</b>
----------------------------	--	---------------------------------



4300	ORLIE	CONVA 2 NM to RW35	LEYDE	ZUSKI 5 NM Holding Pattern	4300
*LNAV only.	*1.1 NM to RW35	2620*	3600	GP 3.00° TCH 40	
1.1 NM	0.9 NM	3 NM	6.1 NM		
CATEGORY	A	B	C	D	
LPV DA	2196-1	250 (300-1)		NA	
LNAV/VNAV DA	2322-1¼	376 (400-1¼)		NA	
LNAV MDA	2320-1	374 (400-1)		NA	
CIRCLING	2380-1 427 (500-1)	2420-1 467 (500-1)	2580-1¾ 627 (700-1¾)	NA	