

VOR/DME or TACAN Y RWY 5R

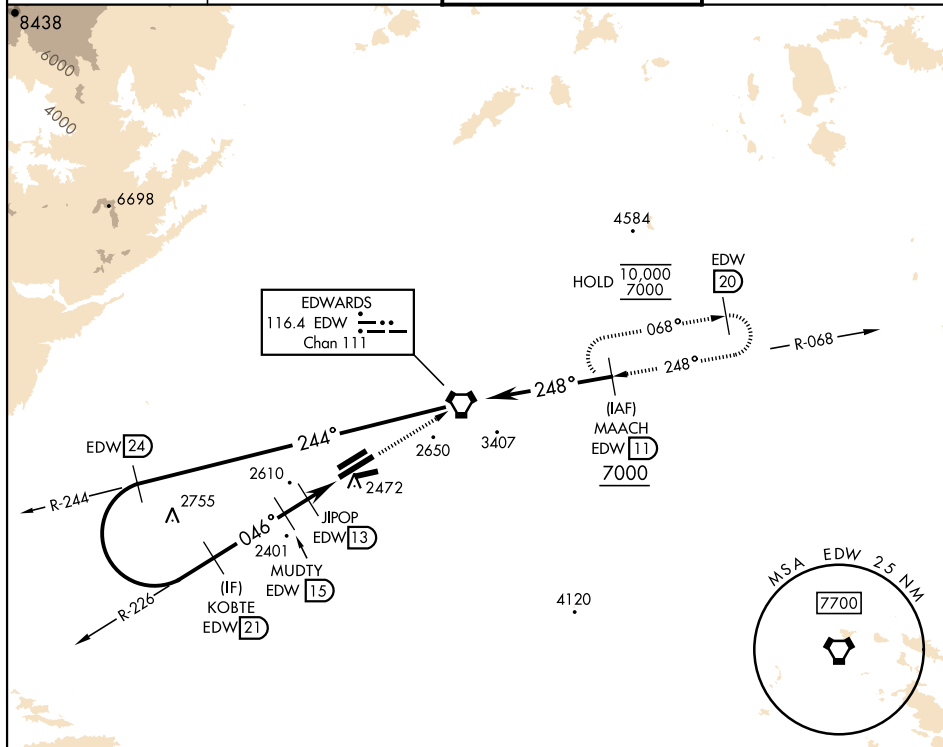
[USAF]

EDWARDS AFB (KEDW)

VORTAC EDW <b>116.4</b> Chan <b>111</b>	APCH CRS <b>046°</b>	Rwy Idg <b>15,024</b> TDZE <b>2303</b> Arpt Elev <b>2311</b>
---	-------------------------	--

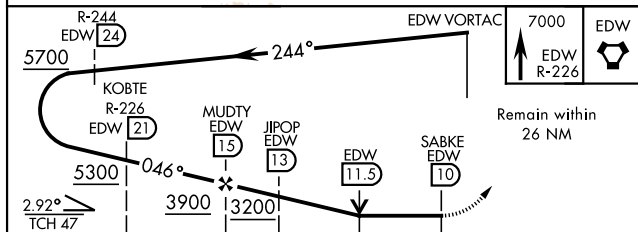
**MISSED APPROACH:** Track EDW VORTAC R-226 to EDW.  
Intercept EDW R-068 to MAACH and hold. Maintain 7000.  
Missed approach requires use of RNAV or ATC radar monitoring.

<p>ATIS ★</p> <p><b>127.425 269.9</b></p>	<p>JOSHUA APP/DEP CON</p> <p><b>133.65 348.7</b></p>	<p>TOWER ★</p> <p><b>120.7 (CTAF) 318.1 (CTAF)</b></p>	<p>GND CON</p> <p><b>121.8 225.4</b></p>
---	--	--	--

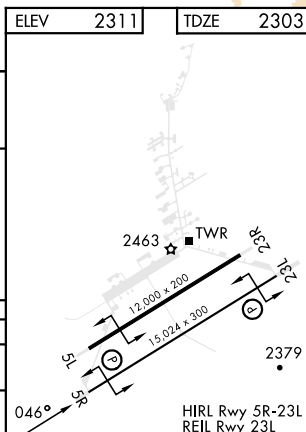


EMERG SAFE ALT 100 NM 16,500

ELEV	2311	TDZE	2303
------	------	------	------



		2 NM	3 NM		
CATEGORY	A	B	C	D	E
S-5R	2820-1 517 (600-1)		2820-1½ 517 (600-1½)		
<b>C</b> CIRCLING*	2880-1 569 (600-1)		2880-1½ 569 (600-1½)	2880-2 569 (600-2)	



EDWARDS, CALIFORNIA

34°54'N-117°53'W

EDWARDS AFB (KEDW)

Amdt 3 23APR20

VOR/DME or TACAN Y RWY 5R

SW-3, 07 AUG 2025 to 04 SEP 2025

SW-3, 07 AUG 2025 to 04 SEP 2025