

EDWARDS, CALIFORNIA

HI-TACAN Z RWY 5R

VORTAC EDW 116.4 Chan 111	APCH CRS 046°	Rwy Idg 15,024 TDZE 2303 Arpt Elev 2311
---	-------------------------	--

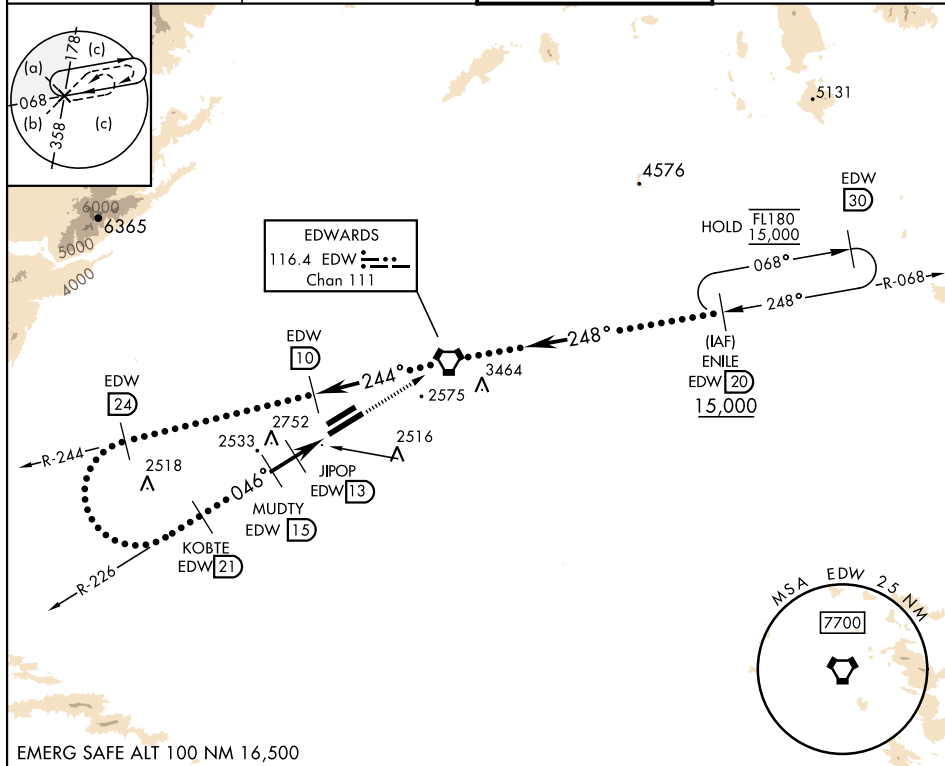
[USAF]

EDWARDS AFB (KEDW)

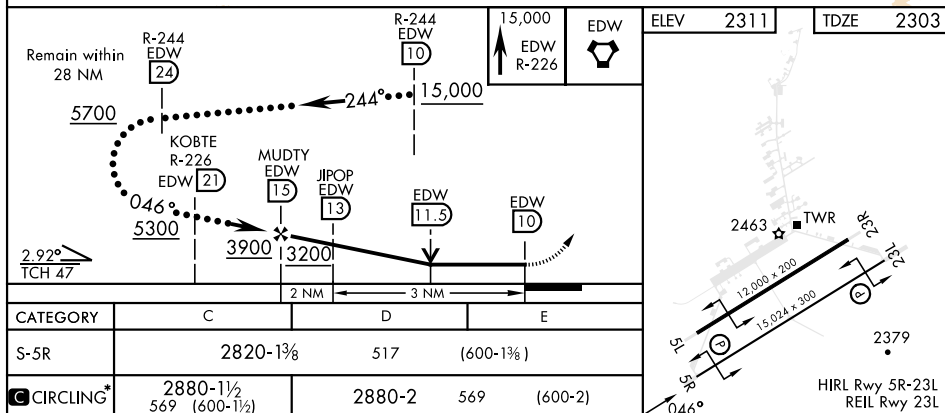
* Circling not authorized NW of Rwy 5L-23R.
Circling not authorized at night to Rwy 5L-23R.

MISSED APPROACH: Track EDW VORTAC R-226 to EDW.
Intercept EDW R-068 to ENILE and hold. Maintain 15,000.
Missed approach requires use of RNAV or ATC RADAR monitoring.

<p>ATIS ★</p> <p>127.425 269.9</p>	<p>JOSHUA APP/DEP CON</p> <p>133.65 348.7</p>	<p>TOWER ★</p> <p>120.7 (CTAF) 318.1 (CTAF)</p>	<p>GND CON</p> <p>121.8 225.4</p>
---	--	--	--



EMERG SAFE ALT 100 NM 16,500



EDWARDS, CALIFORNIA

34°54'N-117°53'W

EDWARDS AFB (KEDW)

Amdt 1 30JAN20

HI-TACAN Z RWY 5R

SW-3, 07 AUG 2025 to 04 SEP 2025

SW-3, 07 AUG 2025 to 04 SEP 2025