

EDWARDS, CALIFORNIA

HI-ILS or LOC/DME Z RWY 23L

LOC I-EDW <u>110.1</u>	APCH CRS <b>226°</b>	Rwy Idg <b>15,024</b> TDZE <b>2286</b> Arpt Elev <b>2311</b>
---------------------------	-------------------------	--

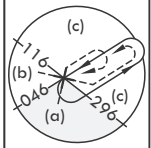
- (USAF)

EDWARDS AFB (KEDW)

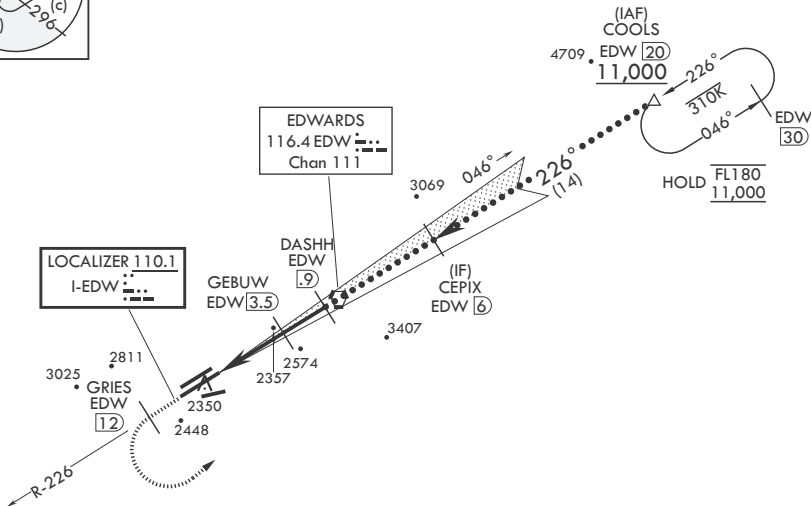
**T** \* Circling not authorized NW of Rwy 5L-23R.  
Circling not authorized at night to Rwy  
5L-23R.

**MISSED APPROACH:** Climb to 11,000. Track EDW VORTAC R-226 outbound to GRIES, then turn left direct COOLS and hold. Missed Approach requires use of RNAV or ATC RADAR monitoring.

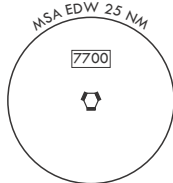
ATIS★ 127.425 269.9	JOSHUA APP CON/DEP CON 133.65 348.7	TOWER★ 120.7 (CTAF) 318.1 (CTAF)	GND CON 121.8 225.4
------------------------	--	-------------------------------------	------------------------



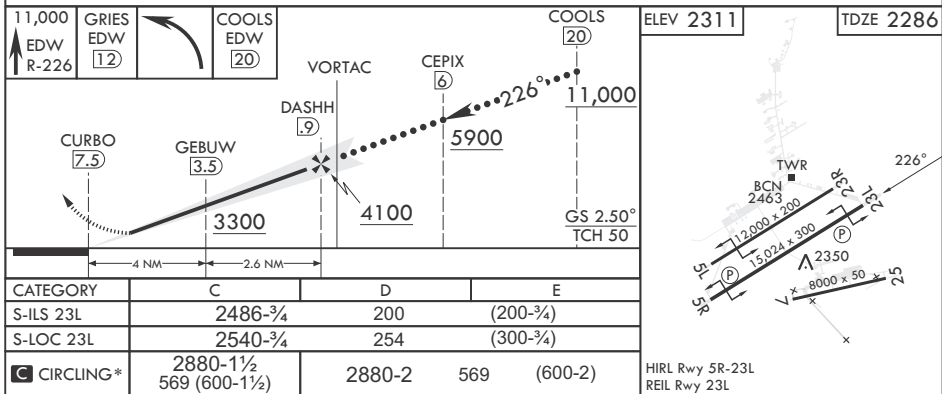
5073



4120



EMERG SAFE ALT 100 NM 16,500



EDWARDS, CALIFORNIA

34°54'N - 117°53'W

EDWARDS AFB (KEDW)

Amdt 1 30JAN20

HI-ILS or LOC/DME Z RWY 23L

SW-3, 07 AUG 2025 to 04 SEP 2025

SW-3, 07 AUG 2025 to 04 SEP 2025