

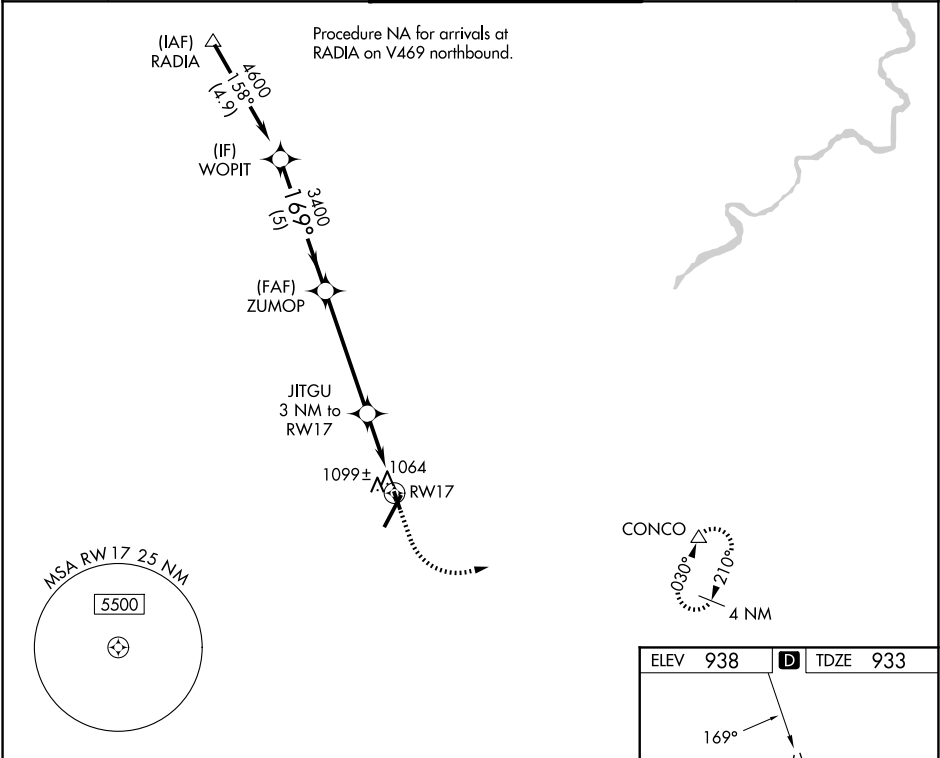
WAAS CH 48934 W17A	APP CRS 169°	Rwy Ldg TDZE 933 Apt Elev 938
--	------------------------	---

RNAV (GPS) RWY 17

LYNCHBURG RGNL/PRESTON GLENN FLD (LYH)

RNP APCH.	MISSED APPROACH: Climb to 1400 then climbing left turn to 3400 direct CONCO and hold.
<div>Procedure NA at night. Rwy 17 helicopter visibility reduction below 1 SM NA.</div>	

ATIS 119.8	ROANOKE APP CON 135.0 254.325	LYNCHBURG TOWER ★ 127.65 (CTAF) 0 257.8	GND CON 121.9	UNICOM 122.95
----------------------	---	---	-------------------------	-------------------------



WOPIT		VGSi and descent angles not coincident (VGSi Angle 4.00/TCH 16).		1400	3400	CONCO
4600		169°				
ZUMOP		3400				
3.00°		TCH 40				
1900		JITGU 3 NM to RW17				
0.9 NM to RW17						
5 NM		4.7 NM		2.1 NM		
0.9						
CATEGORY	A	B	C	D		
LP MDA	1320-1	387 (400-1)	NA			
LNAV MDA	1360-1	427 (500-1)	NA			
CIRCLING	1660-1 722 (800-1)	1780-1¼ 842 (900-1¼)	NA			

