

LOC I-LYH <u>110.1</u>	APP CRS 036°	Rwy Ldg TDZE Apt Elev	6800 905 938
----------------------------------	------------------------	-----------------------------	---

ILS or LOC RWY 4

LYNCHBURG RGNL/PRESTON GLENN FLD (LYH)

ADF required for LOC only. DME required.

T Circling Rwy 17 NA at night. DME from LYH VOR/DME. Simultaneous reception of I-LYH and LYH DME required.

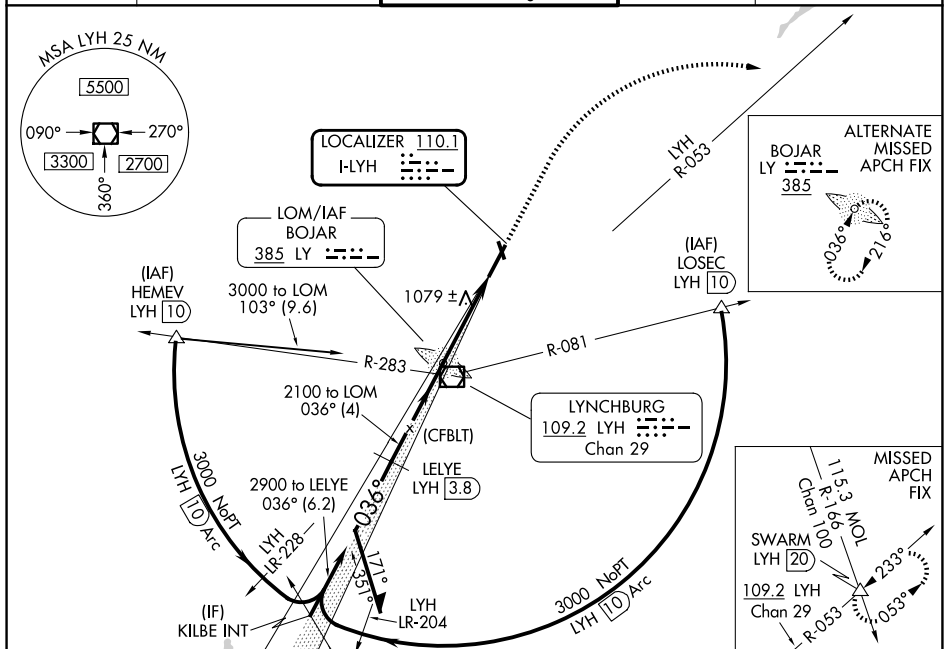
A ** RVR 1800 authorized with use of FD or AP or HUD to DA.

MALSR



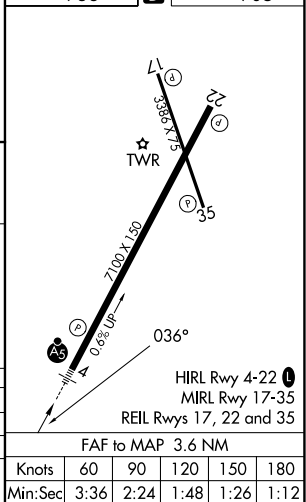
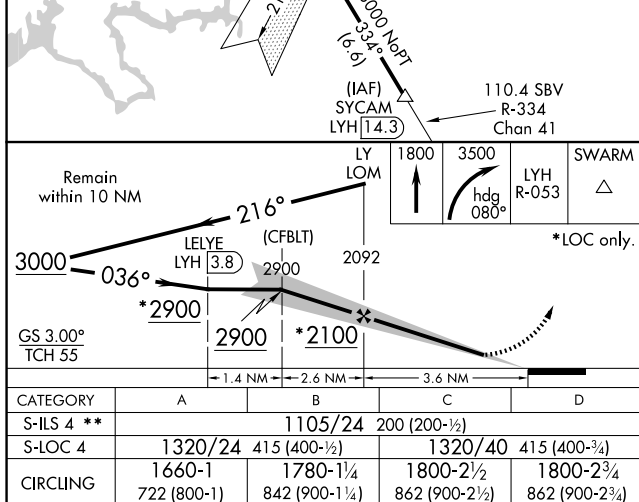
MISSED APPROACH: Climb to 1800 then climbing right turn to 3500 on heading 080° and on LYH VOR/DME R-053 to SWARM INT/LYH 20 DME and hold.

ATIS	ROANOKE APP CON	LYNCHBURG TOWER ★	GND CON	UNICOM
119.8	135.0 254.325	127.65 (CTAF) 0 257.8	121.9	122.95



NE-3, 07 AUG 2025 to 04 SEP 2025

ELEV 938	D	TDZE 905
----------	----------	----------



ILS or LOC RWY 4