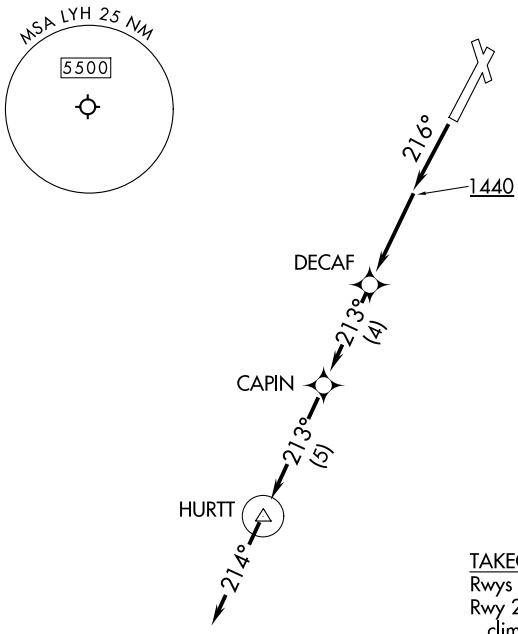


ROANOKE DEP CON 135.0 254.325 ATIS 119.8 GND CON 121.9 LYNCHBURG TOWER ★ 127.65 (CTAF) 257.8	RNAV 1 - DME/DME/IRU or GPS required. RADAR required. RADAR required for non-GPS equipped aircraft.	TOP ALTITUDE: 4000
----------------------------------------------------------------------------------------------------------------	-----------------------------------------------------------------------------------------------------------	-----------------------



TAKEOFF MINIMUMS:
Rwys 4, 17, 35: NA-ATC.
Rwy 22: Standard with minimum
climb of 500' per NM to 1440.

NOTE: Chart not to scale.

▼

DEPARTURE ROUTE DESCRIPTION

TAKEOFF RUNWAY 22: Climb on heading 216° to 1440, then direct DECAF, then on depicted route to HURTT, then on heading 214° for RADAR vectors. Maintain 4000, expect filed altitude within 10 minutes after departure.