

WAAS CH 72905 W04A	APP CRS 039°	Rwy Idg 5000 TDZE 2885 Apt Elev 2885
--	------------------------	---

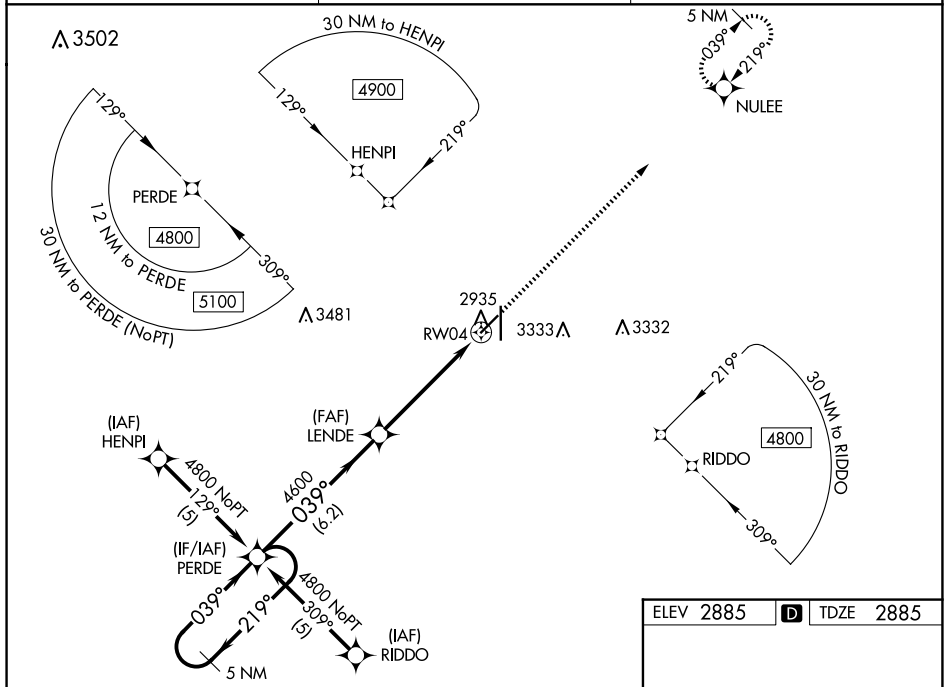
RNAV (GPS) RWY 4
LIBERAL MID-AMERICA RGNL (LBL)

RNP APCH - GPS.

- ▼** For uncompensated Baro-VNAV systems, LNAV/VNAV NA below -20°C or above 54°C.
▲ Circling NA east of Rwy 17-35. When local altimeter setting not received, use GUY altimeter setting and increase LPV DA to 3248 feet; increase LNAV/VNAV DA to 3412 feet and all visibilities $\frac{3}{8}$ SM. Increase all MDAs 120 feet and LNAV visibility Cat C/D $\frac{3}{8}$ SM, and Circling visibility Cat C/D $\frac{1}{4}$ SM. Baro-VNAV and VDP NA when using GUY altimeter setting.

MISSED APPROACH: Climb to 4800 direct NULEE and hold.

AWOS-3PT 118.375	KANSAS CITY CENTER 134.0 257.625	UNICOM 122.8 (CTAF) 0
----------------------------	--	--



5 NM Holding Pattern

PERDE

LEND

4800

219°

039°

039°

4600

4600

1.5 NM to RW04

RW04

GP 3.00° TCH 39°

6.2 NM

3.7 NM

1.5 NM

CATEGORY

A

B

C

D

LPV DA 3136-1 251 (300-1)

RNAV/VNAV DA 3300-1 $\frac{3}{8}$ 415 (500-1 $\frac{3}{8}$)

RNAV MDA 3400-1 515 (600-1) 3400-1 $\frac{3}{8}$ 515 (600-1 $\frac{3}{8}$)

CIRCLING 3400-1 515 (600-1) 3400-1 $\frac{1}{2}$ 515 (600-1 $\frac{1}{2}$) 3640-2 $\frac{1}{2}$ 755 (800-2 $\frac{1}{2}$)

