

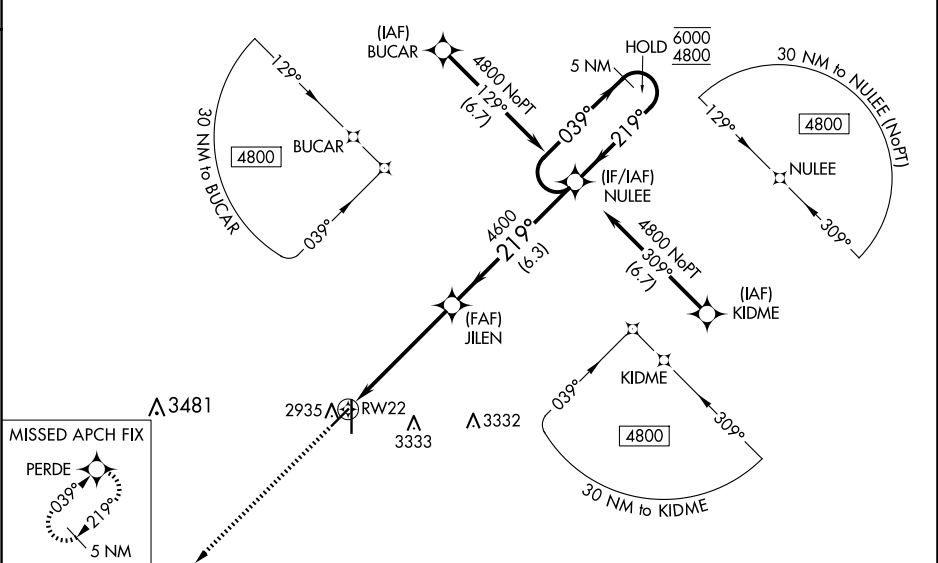
WAAS CH 90405 W22A	APP CRS 219°	Rwy Idg TDZE 2880 Apt Elev 2885
--	------------------------	---

RNAV (GPS) RWY 22

LIBERAL MID-AMERICA RGNL (L.B.L.)

RNP APCH - GPS.	MISSED APPROACH: Climb to 4800 direct PERDE and hold.
<div><div><div><div><div></div><div></div></div><div><div></div><div></div></div></div><div><div><div></div><div></div></div><div><div></div><div></div></div></div><div><div><div></div><div></div></div><div><div></div><div></div></div></div><div><div><div></div><div></div></div><div><div></div><div></div></div></div></div><div>Circling NA east of Rwy 17-35. Baro-VNAV and VDP NA when using GUY altimeter setting. For uncompensated Baro-VNAV systems, LNAV/VNAV NA below -20°C or above 54°C. When local altimeter setting not received, use GUY altimeter setting and increase LPV DA to 3192 feet; Increase LNAV/VNAV DA to 3280 feet and all visibilities ½ SM. Increase all MDAs 120 feet and LNAV visibility Cat C/D ¾ SM, and Circling visibility Cat C/D ¼ SM.</div></div>	

AWOS-3PT 118.375	KANSAS CITY CENTER 134.0 257.625	UNICOM 122.8 (CTAF) 0
----------------------------	--	---------------------------------



ELEV 2885	D	TDZE 2880
-----------	----------	-----------

