

WAAS CH <b>78205</b> <b>W17A</b>	APP CRS <b>174°</b>	Rwy Idg <b>7105</b> TDZE <b>2878</b> Apt Elev <b>2885</b>
--	------------------------	---

RNAV (GPS) RWY 17  
LIBERAL MID-AMERICA RGNL (LBL)

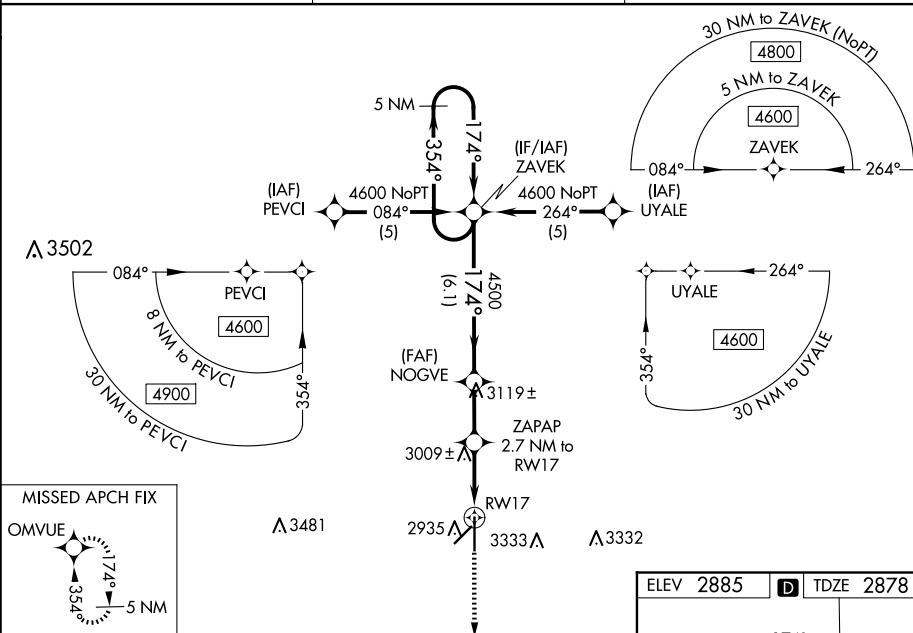
RNP APCH - GPS.


**V** For uncompensated Baro-VNAV systems, LNAV/VNAV NA below -20°C or above 54°C. Circling NA east of Rwy 17-35. When local altimeter setting not received, use GUY altimeter setting and increase LPV DA 3240 feet; increase LNAV/VNAV DA to 3432 feet and all visibilities ¼ SM. Increase all MDAs 120 feet and LNAV visibility Cat C/D ¼ SM, and Circling visibility Cat C/D ¼ SM. Baro-VNAV and VDP NA when using GUY altimeter setting.

MISSED APPROACH: Climb to 4500  
direct OMVUE and hold.

AWOS-3PT  
118.375

KANSAS CITY CENTER  
134.0 257.625

UNICOM  
122.8 (CTAF) **L**[illegible]

CATEGORY		A	B	C	D
LPV	DA	3128-1		250 (300-1)	
LNAV/ VNAV	DA	3320-1 $\frac{3}{8}$		442 (500-1 $\frac{3}{8}$ )	
LNAV	MDA	3260-1	382 (400-1)	3260-1 $\frac{1}{8}$	382 (400-1 $\frac{1}{8}$ )
 CIRCLING		3320-1 435 (500-1)	3360-1 475 (500-1)	3400-1 $\frac{1}{2}$ 515 (600-1 $\frac{1}{2}$ )	3640-2 $\frac{1}{2}$ 755 (800-2 $\frac{1}{2}$ )

