

NOB NOSTER, MISSOURI

RNAV (GPS) RWY 19

APCH CRS	Rwy Idg	12,400
190°	TDZE	871
	Arpt Elev	871

AL-496 (USAF)

WHITEMAN AFB (KSZL)

T * When ALS inop, increase CAT AB RVR to 55 and vis to 1 mile, CAT CDE RVR to 60 and vis to 1 1/8 miles.
** Circling not authorized W of Rwy 1-19.

ALSF-1

MISSED APPROACH: Climb to 3000 direct BEEAN and hold.



A1

DNA ladder with 10 bands

ATIS★
118.725 239.025

APP CON★
27.45 284.0

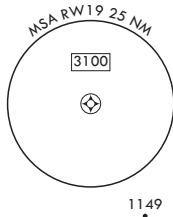
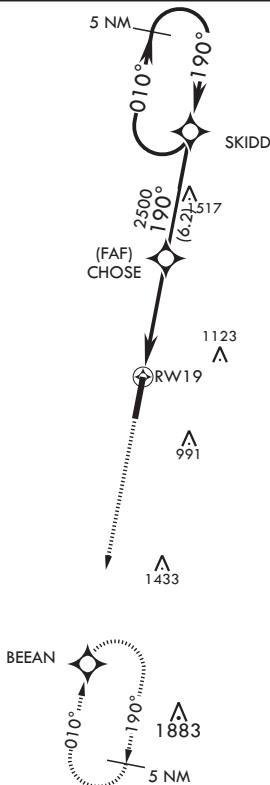
TOWER★
32.4 318.8

GND CON★
19.125 275.8

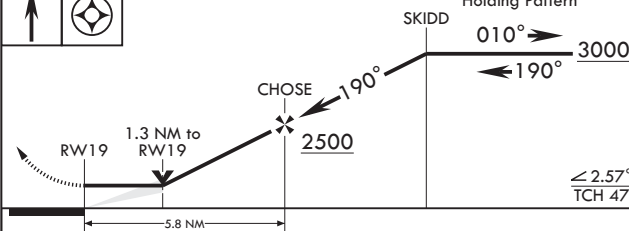
CLNC DEL★
121.75 335.8

ASR

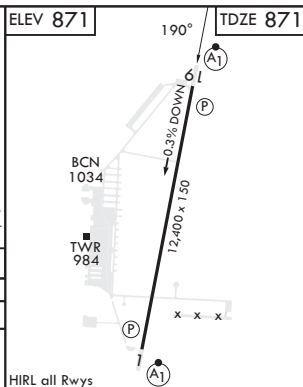
DME/DME RNP 0.3 N/A



EMERG SAFE ALT 100 NM 4700



CATEGORY	A	B	C	D	E
LNAV MDA*	1260/24 389 (400-½)		1260/35	389	(400-½)
C CIRCLING**	1300-1 429 (500-1)	1340-1 469 (500-1)	1340-1½ 469 (500-1½)	1460-2 589	(600-2)



NOB NOSTER, MISSOURI

38°44'N - 93°33'W

WHITEMAN AFB (KSZL)

RNAV (GPS) RWY 19

Amdt 6 10OCT19

NC-3, 07 AUG 2025 to 04 SEP 2025

NC-3, 07 AUG 2025 to 04 SEP 2025