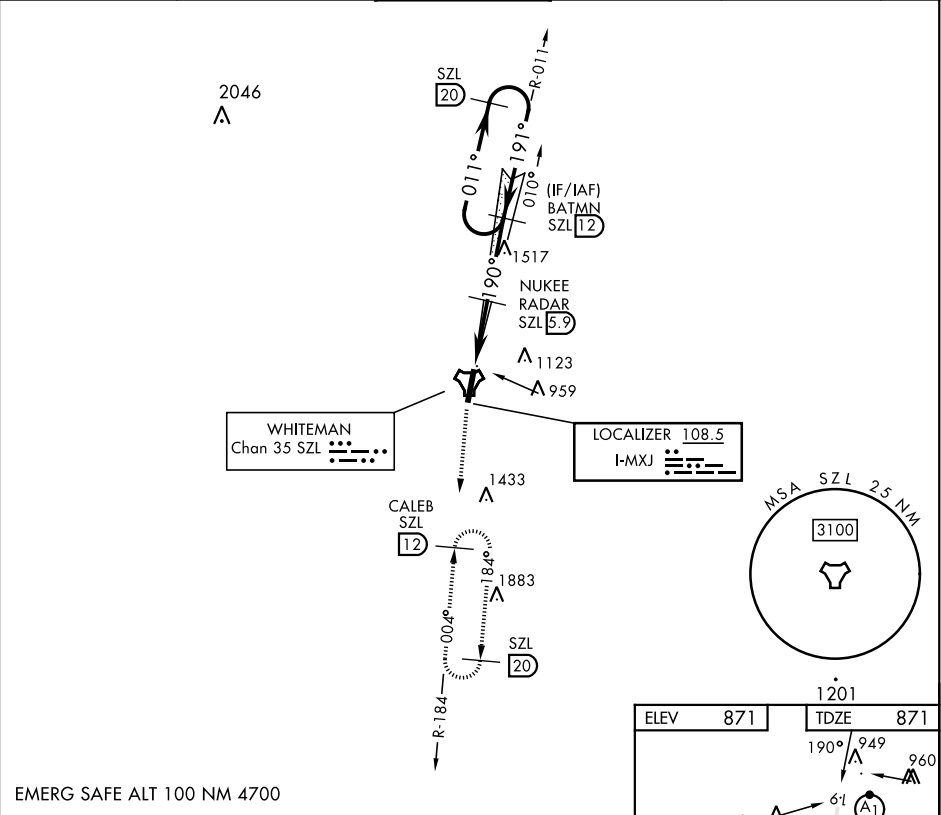


ILS or LOC Y RWY 19

LOC I-MXJ 108.5	APCH CRS 190°	Rwy Idg 12,400 TDZE 871 Arpt Elev 871	AL-496 [USAF]	WHITEMAN AFB (KSZL)	
RADAR or DME required. * When ALS inop, increase RVR to 40 and vis to ¾ mile. ** When ALS inop, increase RVR to 55 and vis to 1 mile. *** Circling not authorized W of Rwy 1-19.			ALSF-1 	MISSED APPROACH: Climb to 3000 via SZL TACAN R-184 to CALEB and hold.	
ATIS ★ 118.725 239.025	APP CON ★ 127.45 284.0	TOWER ★ 132.4 318.8	GND CON ★ 119.125 275.8	CLNC DEL ★ 121.75 335.8	ASR



CATEGORY	A	B	C	D	E
S-ILS 19 *	1071/24		200	(200-½)	
S-LOC 19 **	1220/24	349 (400-½)	1220/30	349	(400-¾)
*** CIRCLING	1300-1	1340-1	1340-1½	1460-2	589 (600-2)
	429 (500-1)	469 (500-1)	469 (500-1½)		

HIRL Rwy 1-19					
FAF to MAP 4.7 NM					
Knots	60	90	120	150	180
Min:Sec	4:42	3:08	2:21	1:53	1:34

ILS or LOC Y RWY 19

NC-3, 07 AUG 2025 to 04 SEP 2025

NC-3, 07 AUG 2025 to 04 SEP 2025