

KNOB NOSTER, MISSOURI

ILS or LOC Y RWY 1

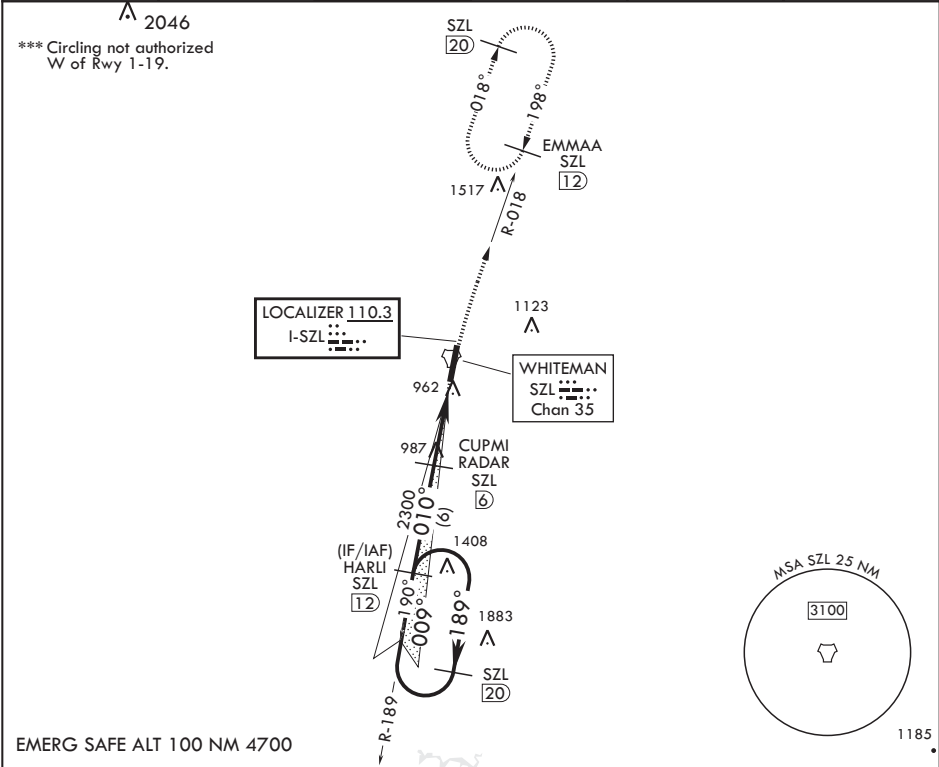
LOC I-SZL 110.3	APCH CRS 010°	Rwy Idg TDZE Arpt Elev	12,400 837
--------------------	------------------	------------------------------	---------------

AL-496 (USAF)

WHITEMAN AFB (KSZL)

RADAR or DME required			ALSF-1	MISSED APPROACH: Climb to 3000 via SZL TACAN R-018 to EMMAA and hold.	
* When ALS inop, increase CAT ABCDE RVR to 40, vis to 3/4 mile. ** When ALS inop, increase CAT AB RVR to 55, vis to 1 mile; CAT CDE vis to 1 1/4 miles.			(A1)		

ATIS★ 118.725 239.025	APP CON★ 127.45 284.0	TOWER★ 132.4 318.8	GND CON★ 119.125 275.8	CLNC DEL★ 121.75 335.8	ASR
--------------------------	--------------------------	-----------------------	---------------------------	---------------------------	-----



EMERG SAFE ALT 100 NM 4700

SZL 20 DME Holding Pattern		HARLI SZL 12		3000 R-018		EMMAA SZL 12		ELEV 871		TDZE 837	
189°		009°		010°		CUPMI RADAR SZL 6		VGSI and ILS glidepath not coincident (VGSI Angle 2.86/TCH 51)		SZL 2.5	
GS 2.86° TCH 45		2300		4.2 NM		0.5		BONIC SZL 1.8		BCN 923 TWR 984 12,400 x 150 0.3% Up x x x	
CATEGORY		A		B		C		D		E	
S-ILS 1*		1037/24		200		(200-½)					
S-LOC 1**		1260/24 423 (400-½)		1260/40		423 (400-¾)					
CIRCLING***		1300-1 429 (500-1)		1340-1 469 (500-1)		1340-1½ 469 (500-1½)		1460-2 589 (600-2)			
HIRL all Rwys (A1) 010°											
FAF to MAP 4.2 NM											
Knots		60		90		120		150		180	
Min:Sec		4:12		2:48		2:06		1:41		1:24	



KNOB NOSTER, MISSOURI

38°44'N - 93°33'W

WHITEMAN AFB (KSZL)

Amdt 1 10OCT19

ILS or LOC Y RWY 1

NC-3, 07 AUG 2025 to 04 SEP 2025

NC-3, 07 AUG 2025 to 04 SEP 2025