

NOB NOSTER, MISSOURI

HI-ILS or LOC Z RWY 19

LOC I-MXJ <u>108.5</u>	APCH CRS 190°	Rwy Idg 12,400 TDZE 871 Arpt Elev 871	AL-496 [USAF]	WHITEMAN AFB (KSZL)
---------------------------	-------------------------	--	---------------	---------------------

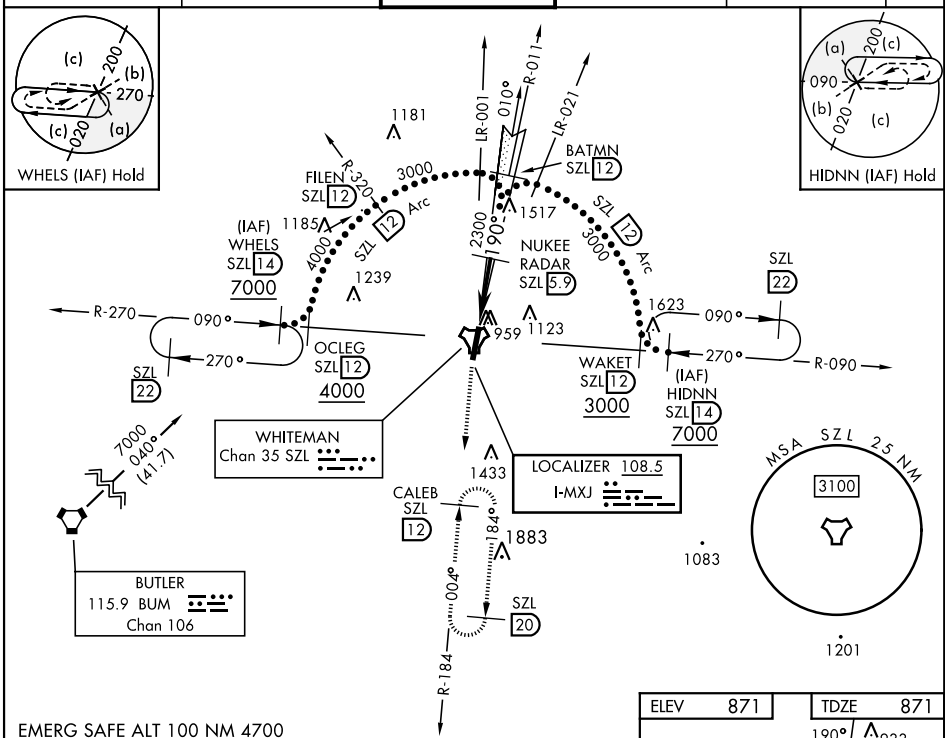
RADAR or DME required.

T *When ALS inop, increase CAT CDE RVR to 40 and vis to $\frac{3}{4}$ mile.
 ** When ALS inop, increase CAT CDE RVR to 55 and vis to 1 mile.
 *** Circling not authorized W of Rwy 1-19.

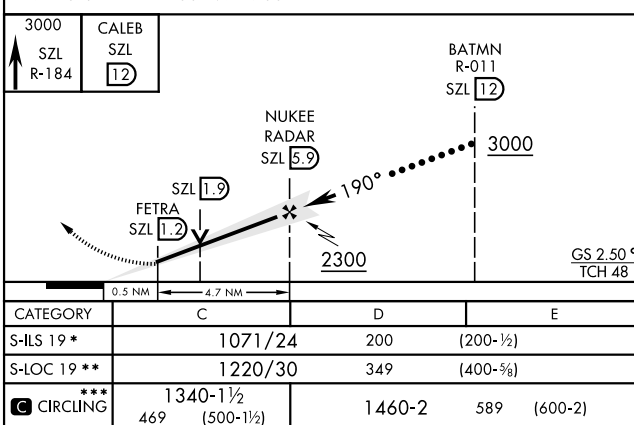
ALSF-1

MISSED APPROACH: Climb to 3000 via SZL TACAN R-184 to CALEB and hold.

ATIS ★ 118.725 239.025	APP CON ★ 127.45 284.0	TOWER ★ 132.4 318.8	GND CON ★ 119.125 275.8	CLNC DEL ★ 121.75 335.8	ASR
---------------------------	---------------------------	------------------------	----------------------------	----------------------------	-----



EMERG SAFE ALT 100 NM 4700



The diagram shows the layout of HIRL Rwy 1-19. At the top, a box contains 'ELEV 871' and another box contains 'TDZE 871'. A heading of '190°' is indicated. A line representing the runway is shown with a width of '12,400 x 150'. Various navigation aids and markers are labeled: 'A1' (top), 'P' (top), '1034' (star), 'TWR 984' (square), '1018' (triangle), 'P' (bottom), and 'A1' (bottom). A distance of '6.1' is marked near the top, and '0.3% DOWN' is indicated along the runway line. A scale of '1:50' is shown at the bottom right. The text 'HIRL Rwy 1-19' is at the bottom left. Below the diagram is a table for 'FAF to MAP 4.7 NM'.

	Knots	120	140	160	180	200
Min:Sec	2:21	2:01	1:46	1:34	1:25	

KNOB NOSTER, MISSOURI

38°44'N-93°33'W

WHITEMAN AFB (KSZL)

Amdt 1 10OCT19

HI-ILS or LOC Z RWY 19

NC-3, 07 AUG 2025 to 04 SEP 2025

NC-3, 07 AUG 2025 to 04 SEP 2025