
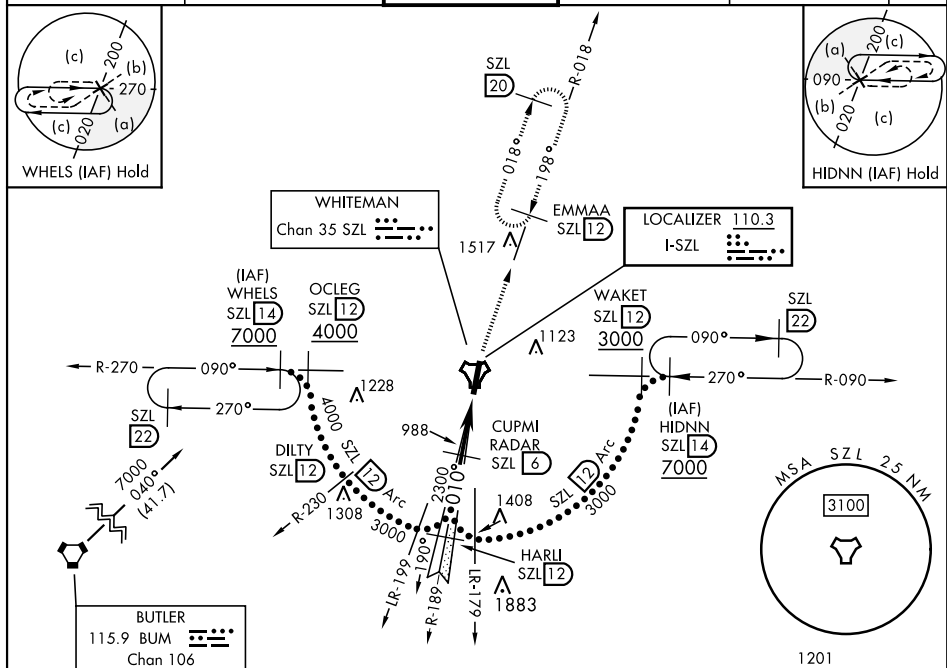


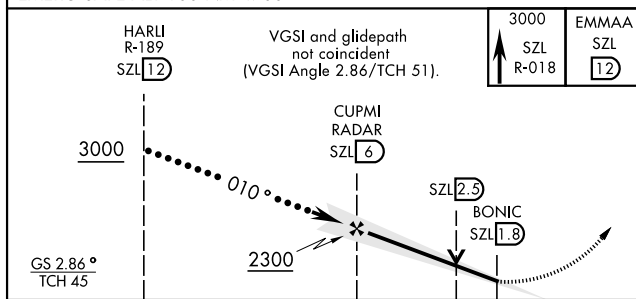
## HI-ILS or LOC Z RWY 1

LOC I-SZL <b>110.3</b>	APCH CRS <b>010°</b>	Rwy Idg <b>12,400</b> TDZE <b>837</b> Arpt Elev <b>871</b>	AL-496 [USAF]	WHITEMAN AFB (KSZL)
RADAR or DME required.				MISSED APPROACH: Climb to 3000 via SZL TACAN R-018 to EMMAA and hold.
<p>▼ * When ALS inop, increase CAT CDE RVR to 40 and vis to <math>\frac{3}{4}</math> mile.</p> <p>** When ALS inop, increase CAT CDE vis to <math>\frac{1}{4}</math> miles.</p> <p>*** Circling not authorized W of Rwy 1-19.</p>				

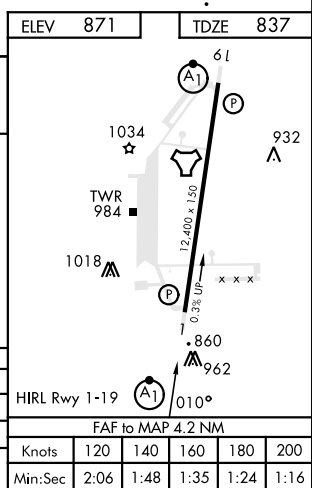
ATIS ★		APP CON ★		TOWER ★		GND CON ★		CLNC DEL ★		ASR
118.725	239.025	127.45	284.0	132.4	318.8	119.125	275.8	121.75	335.8	



EMERG SAFE ALT 100 NM 4700



		← 4.2 NM →		0.5 NM	
CATEGORY	C	D	E		
S-ILS 1*	1037/24	200	(200-½)		
S-LOC 1**	1260/40	423	(400-¾)		
*** CIRCLING	1340-1½ 469 (500-1½)	1460-2	589	(600-2)	



KNOB NOSTER, MISSOURI

38°44'N-93°33'W

WHITEMAN AFB (KSZL)

Amdt 1 10OCT19

## HI-ILS or LOC Z RWY 1