

LOC/DME I-DP <b>110.7</b> Chan <b>44</b>	APP CRS <b>358°</b>	Rwy Idg <b>5501</b> TDZE <b>821</b> Apt Elev <b>825</b>
--	------------------------	---

ILS or LOC RWY 35  
INDEPENDENCE MUNI (IDP)

NA

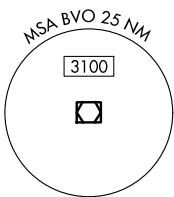
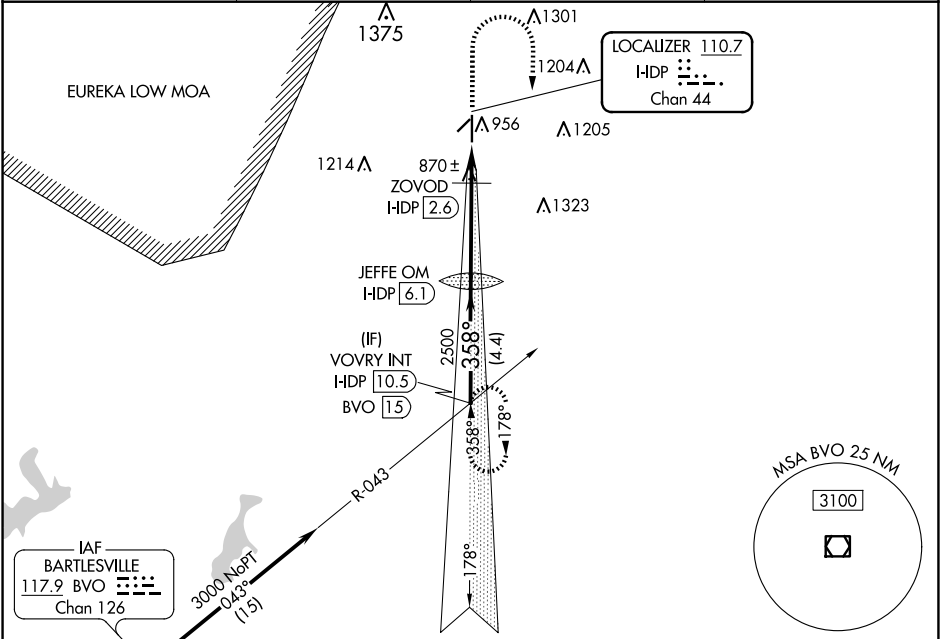
Circling Rwy 4, 22 NA at night.

MALSR

MISSED APPROACH:

Climb to 1500 then climbing right turn to 3000 on heading 179° to intercept BVO VOR/DME R-043 to VOVRY INT and hold.

AWOS-3PT <b>118.525</b>	KANSAS CITY CENTER <b>128.6 282.325</b>	CLNC DEL <b>121.65</b>	UNICOM <b>123.05 (CTAF) 0</b>
----------------------------	--	---------------------------	----------------------------------



		Procedure NA for arrivals at BVO DME on V190 southwest bound.			
VOVRY INT I-DP 10.5 BVO 15		JEFFE OM HDP 6.1		<div>1500 ↑</div> <div>3000 hdg 179°</div> <div>BVO R-043</div> <div>VOVRY INT</div>	
3000		2461		ZOVOD HDP 2.6 I-DP 1.9	
GS 3.00° TCH 42		358°		I-DP 1.1	
2500		1340			
4.4 NM		3.5 NM		0.7 NM 0.8 NM	
CATEGORY	A	B	C	D	
S-ILS 35	1021-1/2 200 (200-1/2)				
S-LOC 35	1340-1/2 519 (600-1/2)		1340-1 519 (600-1)		
CIRCLING	1340-1 515 (600-1)		1340-1 1/2 515 (600-1 1/2)		1680-2 3/4 855 (900-2 3/4)
ZOVOD FIX MINIMUMS					
S-LOC 35	1120-1/2 299 (300-1/2)				
CIRCLING	1280-1 455 (500-1)		1340-1 1/2 515 (600-1 1/2)		1680-2 3/4 855 (900-2 3/4)