

RNAV (GPS) RWY 6

APCH CRS	Rwy Idg	11,201
055°	TDZE	5
	Arpt Elev	6

AL-494 (USAF)

HOMESTEAD ARB (KHST)

⚠ * When ALS inop increase CAT AB RVR to 55, vis to 1 mile, CAT CDE vis to 1 3/8 miles.
** Circling NA NW of Rwy 6-24.

ALSF-1



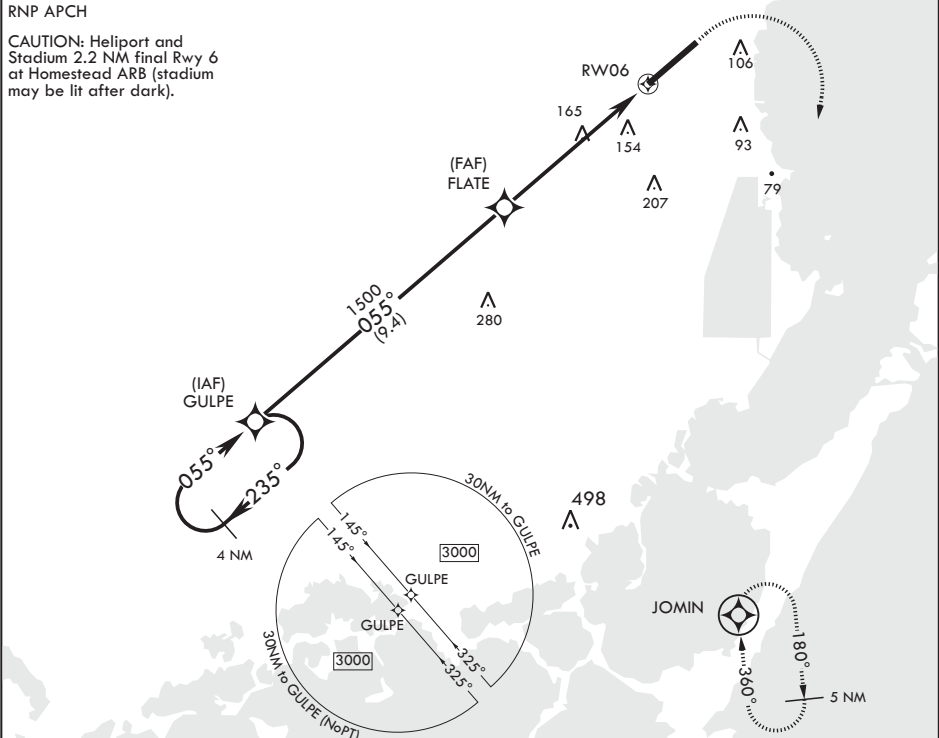
MISSED APPROACH: Climb to 800 then climbing right turn to 3000 direct JOMIN and hold.

ATIS ★ 132.275 269.9	APP CON/DEP CON 123.8 257.675	TOWER 133.45 279.55	GND CON 121.75 275.8	CLNC DEL 121.75 275.8
-------------------------	----------------------------------	------------------------	-------------------------	--------------------------

DME/DME RNP -0.3 NA


RNP APCH

CAUTION: Heliport and Stadium 2.2 NM final Rwy 6 at Homestead ARB (stadium may be lit after dark).

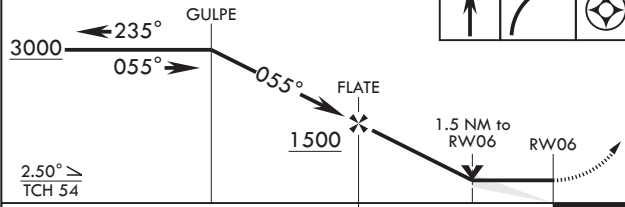


EMERG SAFE ALT 100 NM 15,100

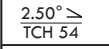
800 3000 JOMIN ELEV 6 TDZE 5




3000 235° 055° 055° 1500 1.5 NM to RW06 RW06



2.50° ≥ TCH 54

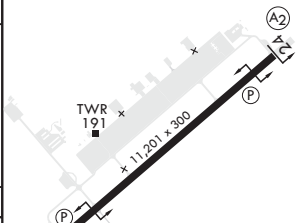


5.4 NM

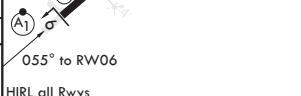


CATEGORY	A	B	C	D	E
LNAV MDA*	460/24 455 (500-1/2)	460/45 455 (500-3/8)	460/45 455 (500-3/8)	460/45 455 (500-3/8)	460/45 455 (500-3/8)
CIRCLING**	460-1 454 (500-1)	500-1 494 (500-1)	520-1 514 (600-1 1/2)	580-2 574 (600-2)	780-2 774 (800-2 3/4)

055° to RW06



HIRL all Rwys



RNAV (GPS) RWY 6

SE-3, 07 AUG 2025 to 04 SEP 2025

SE-3, 07 AUG 2025 to 04 SEP 2025