

HOMESTEAD, FLORIDA

RNAV (GPS) RWY 24

APCH CRS 235°	Rwy Idg 11,201 TDZE 5 Arpt Elev 6
------------------	---

AL-494 (USAF)

HOMESTEAD ARB (KHST)

T * When ALS inop increase CAT AB RVR to 55, vis to 1 mile;
CAT CDE RVR to 60, vis to 1 1/8 miles.
** Circling NA NW of Rwy 06-24.

SALS

MISSED APPROACH: Climb to 800 then climbing left turn to 3000 direct JOMIN and hold.

ATIS ★
132.275 2

APP CON/DEP CON
123.8 257.675

TOWER
133.45 279.55

GND CON
121.75 275.8

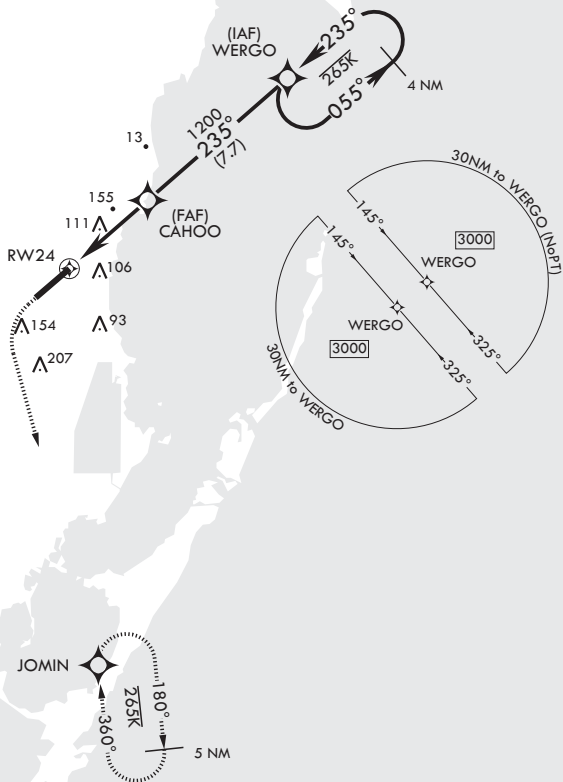
CLNC DEL
121.75 275.8

RNP APCH

DME/DME RNP -0.3 NA

CAUTION: Heliport and Stadium 2.2 NM from departure end Rwy 24 at Homestead ARB (Stadium may be lit after dark).

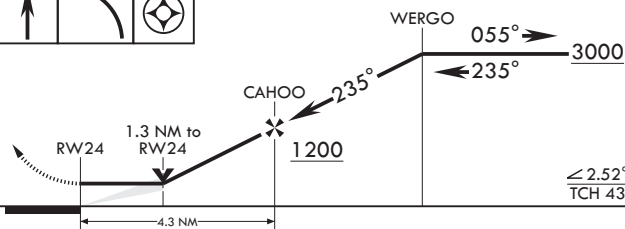
1844 A



EMERG SAFE ALT 100 NM 15,100

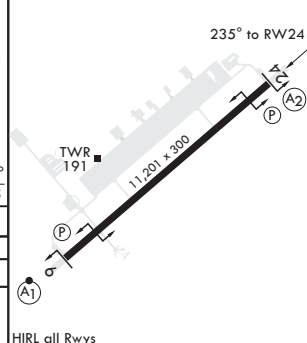


ELEV 6

 TDZE 5 |
$$\angle 2.52^\circ$$

ICH 43

CATEGORY	A	B	C	D	E
LNAV MDA*	460/40	455 (500-3%)	460/55	455	(500-1)
C CIRCLING**	460-1 454 (500-1)	500-1 494 (500-1)	520-1½ 514 (600-1½)	580-2 574 (600-2)	780-2¾ 774 (800-2¾)



HIRL all Rwyys

HOMESTEAD, FLORIDA

25°29'N - 80°23'W

HOMESTEAD ARB (KHST)

Amdt 3 30DEC21
TERPS

RNAV (GPS) RWY 24

SE-3, 07 AUG 2025 to 04 SEP 2025

SE-3, 07 AUG 2025 to 04 SEP 2025