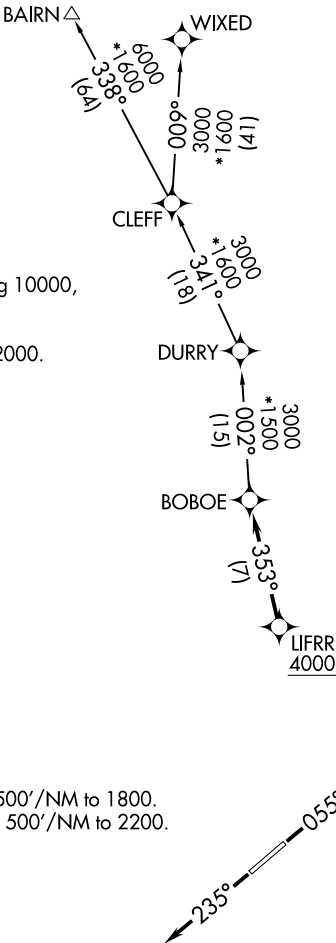


TOP ALTITUDE:  
ASSIGNED BY ATC

RNAV 1 - DME/DME/IRU or GPS.  
RADAR required for non-GPS  
equipped aircraft.

NOTE: Accelerate to 250K until leaving 10000,  
if unable, advise ATC.  
NOTE: Jet aircraft only.  
NOTE: For aircraft filed at or below 12000.

MIAMI DEP CON  
125.5 354.1  
ATIS\*  
132.275 269.9  
CLNC DEL  
121.75 275.8  
GND CON  
121.75 275.8  
HOMESTEAD TOWER  
133.45 279.55



TAKEOFF MINIMUMS  
Rwy 6: Standard with minimum climb of 500'/NM to 1800.  
Rwy 24: Standard with minimum climb of 500'/NM to 2200.

NOTE: Chart not to scale.



DEPARTURE ROUTE DESCRIPTION

TAKEOFF RUNWAY 6: Climb on heading 055° or as assigned by ATC, thence. . .  
TAKEOFF RUNWAY 24: Climb on heading 235° or as assigned by ATC, thence. . .

. . .for RADAR vector to cross LIFRR at or above 4000, then on track 353° to BOBOE, then  
on assigned transition, maintain ATC assigned altitude, expect clearance to filed altitude  
within 10 minutes after departure.

BAIRN TRANSITION (LIFRR2.BAIRN)  
WIXED TRANSITION (LIFRR2.WIXED)