

HOMESTEAD ARB (KHST)
HOMESTEAD, FLORIDA

MIAMI DEP CON	
125.5	354.1
ATIS ★	
132.275	269.9
CLNC DEL	
121.75	275.8
GND CON	
121.75	275.8
HOMESTEAD TOWER	
133.45	279.55

RADAR required.

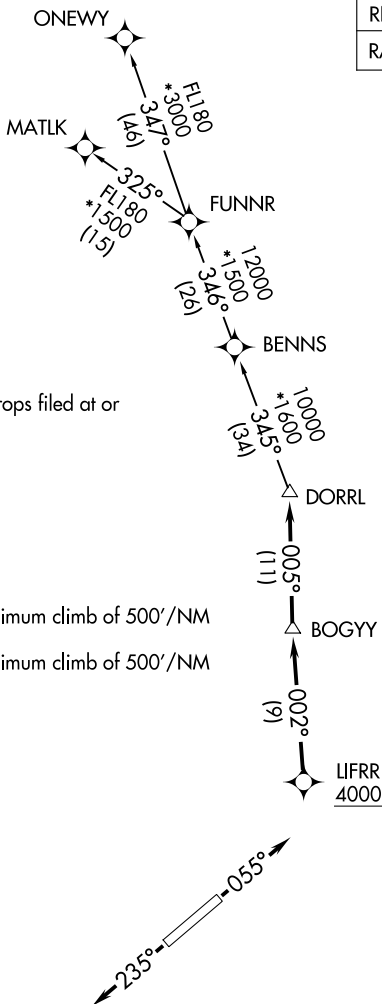
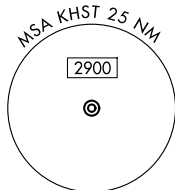
**TOP ALTITUDE:
ASSIGNED BY ATC**

NOTE: For turbo-props/props filed at or above 13000.

TAKEOFF MINIMUMS

Rwy 6: Standard with minimum climb of 500'/NM to 1800.

Rwy 24: Standard with minimum climb of 500'/NM to 2200.



NOTE: Chart not to scale.

DEPARTURE ROUTE DESCRIPTION

TAKEOFF RUNWAY 6: Climb on heading 055° or as assigned by ATC for RADAR vectors to cross LIFRR at or above 4000, thence. . . .

TAKEOFF RUNWAY 24: Climb on heading 235° or as assigned by ATC for RADAR vectors to cross LIFRR at or above 4000, thence. . . .

...on track 002° to BOGY, then on track 005° to DORRL then on (transition), maintain altitude as assigned by ATC, expect filed altitude 10 minutes after departure.

MATLK TRANSITION (DORRL2.MATLK)

ONEWY TRANSITION (DORRL2.ONEWY)

HOMESTEAD, FLORIDA
HOMESTEAD ARB (KHST)

(DORRL2.DORRL) 21MAR24

SE-3, 07 AUG 2025 to 04 SEP 2025