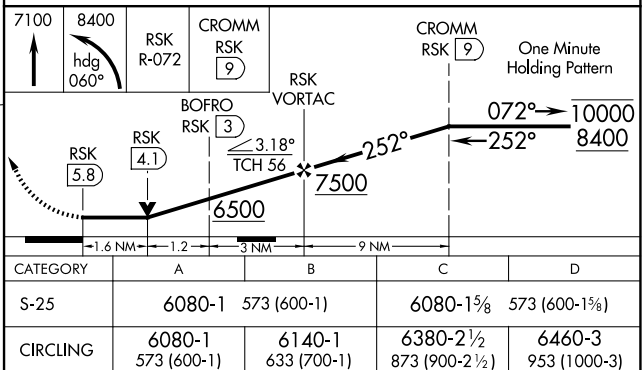
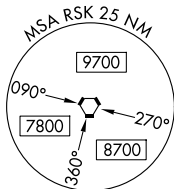
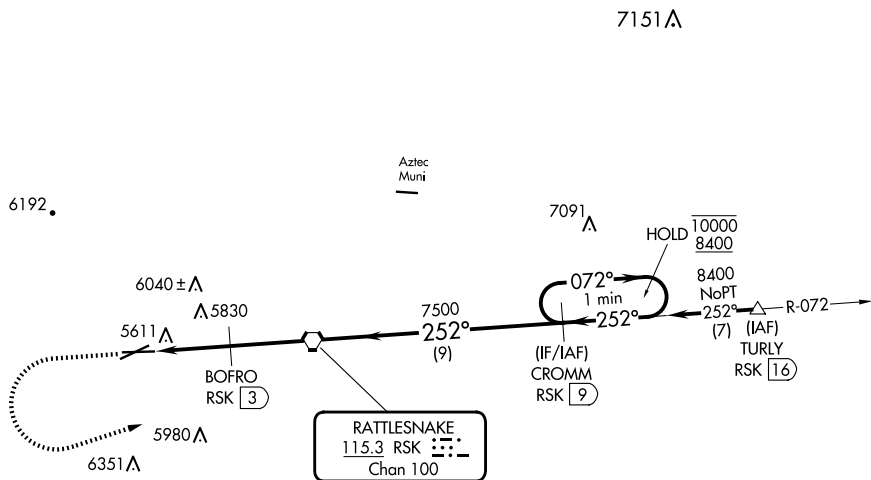


VOR RWY 25
FOUR CORNERS RGNL (FMN)

T VDP NA when using Durango-La Plata County altimeter setting. Circling NA
A for Cat D southeast of Rwy 5 and south of Rwy 25. When local altimeter
setting not received, use Durango-La Plata County altimeter setting and
increase all MDAs 260 feet; increase S-25 visibility Cat B/C/D ½ SM
and Circling visibility Cat A/B/C ½ SM.

MISSED APPROACH: Climb to 7100 then climbing left turn to 8400 on heading 060° and on RSK VORTAC R-072 to CROMM/9 DME and hold.

- 6900



REIL Rwys 23 and 25 **L**
MIRL Rwys 5-23 and 7-25 **L**

36°44'N-108°14'W

FOUR CORNERS RGNL (FMN)
VOR RWY 25