

WAAS CH 90110 W07A	APP CRS 076°	Rwy Ldg TDZE 5502 Apt Elev 5507
--	------------------------	---

RNAV (GPS) RWY 7

FOUR CORNERS RGNL (FMN)

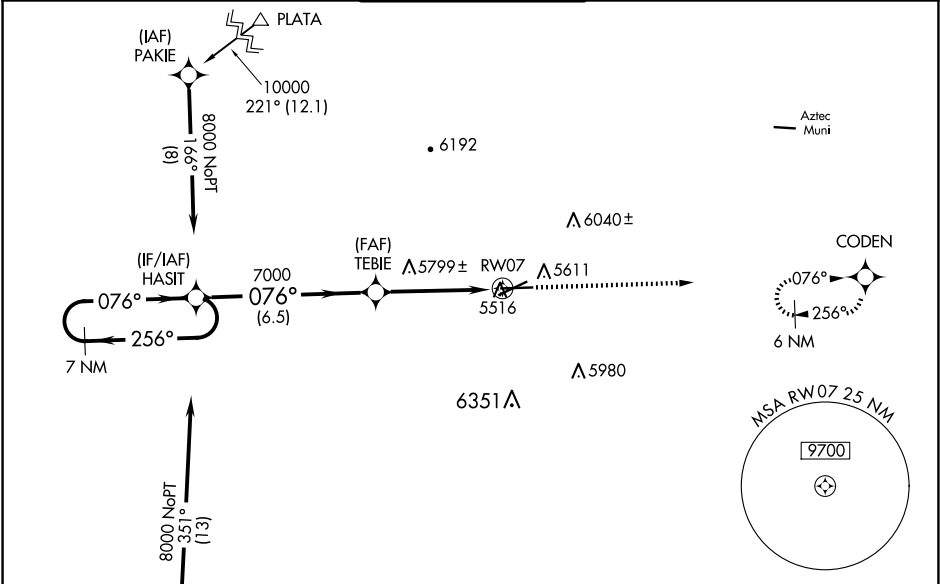
RNP APCH-GPS.

⚠

Baro-VNAV and VDP NA when using Durango altimeter setting. For uncompensated Baro-VNAV systems, LNAV/VNAV NA below -25°C or above 54°C. Circling NA for Cat D southeast of Rwy 5 and south of Rwy 25. When local altimeter setting not received, use Durango altimeter setting and increase LPV DA to 6003 feet and LNAV/VNAV DA to 6223 and all visibilities $\frac{5}{8}$ SM; increase all MDAs 260 feet and visibility LNAV Cats B/C/D and Circling Cats A/B/C $\frac{5}{8}$ SM.

MISSED APPROACH:
Climb to 8300 direct
CODEN and hold.

ATIS 127.15	DENVER CENTER 118.575 348.7	FARMINGTON TOWER* 118.9 (CTAF) 257.8	GND CON 121.7	UNICOM 122.95
-----------------------	---------------------------------------	---	-------------------------	-------------------------



ELEV 5507 **D** TDZE 5502

7 NM Holding Pattern

8000

GP 3.00°
TCH 52

256°

076°

HASIT

076°

TEBIE

7000

6.5 NM

2.9 NM

1.7 NM

*1.7 NM to RW07

RW07

*LNAV only

8300

CODEN

0.5% UP

0.4% UP

6704 X 100

6501 X 150

TWR

25

CATEGORY	A	B	C	D
LPV DA		5760- $\frac{3}{4}$	258 (300- $\frac{3}{4}$)	
LNAV/VNAV DA		5980-1 $\frac{3}{8}$	478 (500-1 $\frac{3}{8}$)	
LNAV MDA	6060-1	558 (600-1)	6060-1 $\frac{5}{8}$	558 (600-1 $\frac{5}{8}$)
CIRCLING	6100-1 593 (600-1)	6180-1 673 (700-1)	6380-2 $\frac{1}{2}$ 873 (900-2 $\frac{1}{2}$)	6460-3 953 (1000-3)

REIL Rwy 23 and 25 **D**
MRL Rwy 5-23 and 7-25 **D**