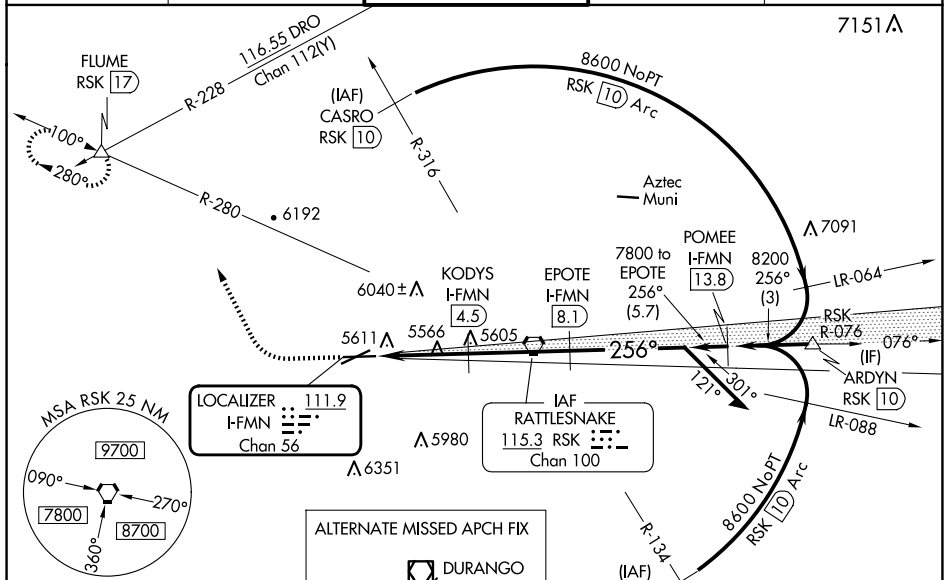


ILS or LOC RWY 25
FOUR CORNERS RGNI (FMN)

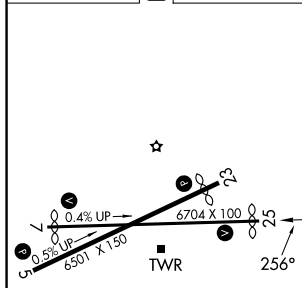
T VDP NA with Durango altimeter setting. Circling NA for Cat D southeast of Rwy 5 and south of Rwy 25. When local altimeter setting not received, use Durango altimeter setting and increase S-LSL 25 DA to 5950 feet and all visibilities $\frac{3}{4}$ SM; increase all MDAs 260 feet and S-LOC 25 visibility Cat C/D $\frac{3}{4}$ SM, and Circling visibility Cat B $\frac{1}{2}$ SM and Cat C $\frac{1}{2}$ SM.

MISSED APPROACH: Climb to 6100 then climbing right turn to 9000 on heading 321° and on RSK VORTAC R-280 to FLUME INT and hold, continue climb-in-hold to 9000.

ATIS 127.15	DENVER CENTER 118.575 348.7	FARMINGTON TOWER★ 118.9 (CTAF) 0 257.8	GND CON 121.7	UNICOM 122.95
----------------	--------------------------------	-------------------------------------------	------------------	------------------



ELEV 5507	D	TDZE 5507
-----------	----------	-----------

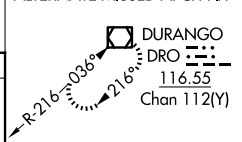


REIL Rwys 23 and 25 **L**
MIRL Rwys 5-23 and 7-25 **L**

FAF to MAP 7 NM

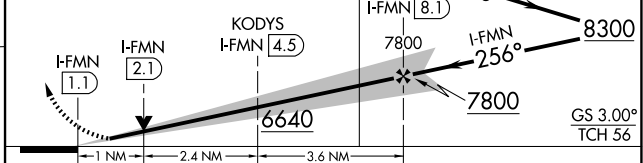
Knots	60	90	120	150	180
Min:Sec	7:00	4:40	3:30	2:48	2:20

ALTERNATE MISSED APCH FIX



6100 ↑	9000 hdg 321°	RSK R-280	FLUME △
-----------	---------------------	--------------	------------

Use I-FMN DME when on the localizer course.



CATEGORY	A	B	C	D
S-ILS 25	5707- ³ / ₄ 200 (200- ³ / ₄)			
S-LOC 25	5880-1 373 (400-1)			
C CIRCLING	6020-1 513 (600-1)	6140-1 633 (700-1)	6380-2½ 873 (900-2½)	6400-3 893 (900-3)