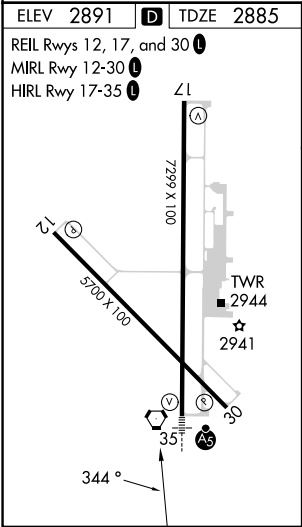
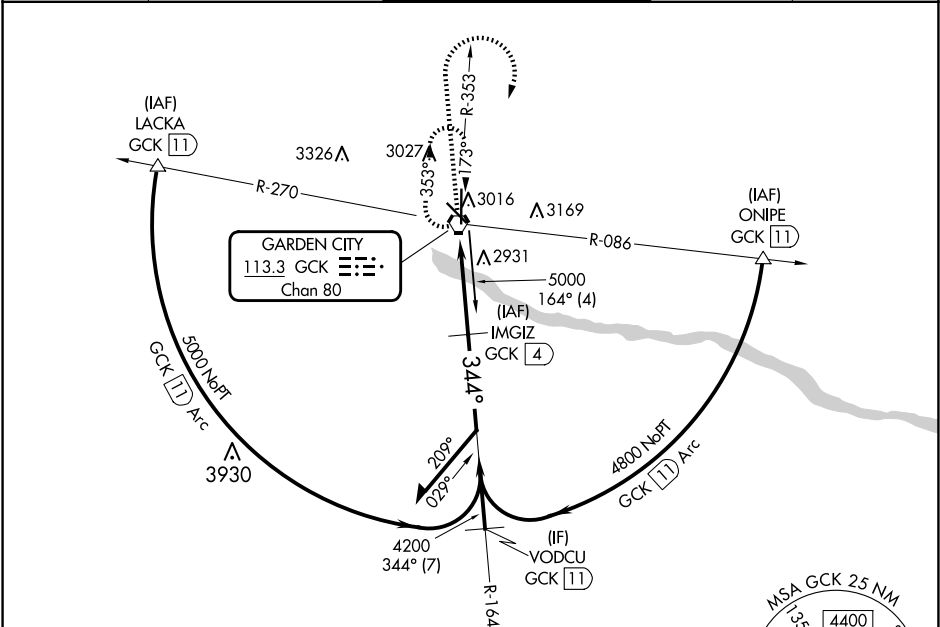


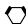


VORTAC GCK	APP CRS	Rwy Idg	7299
113.3	344°	TDZE	2885
Chan 80		Apt Elev	2891

VOR RWY 35  
GARDEN CITY RGNL (GCK)

DME required.	MALSR	MISSED APPROACH: Climb to 4000 then climbing right turn to 4800 direct GCK VORTAC and hold.
For inop ALS, increase S-35 Cat C visibility to ¾ SM. Inop table does not apply to S-35 Cat D.		

ASOS 121.325	KANSAS CITY CENTER 125.2 285.425	GARDEN CITY TOWER ★ 118.15 (CTAF) 0 254.4	GND CON 119.0 254.4	UNICOM 122.95
-----------------	-------------------------------------	--	------------------------	------------------



<div><div><div><div>4000</div><div>↑</div></div><div><div>4800</div><div>↗</div></div><div><div>GCK</div><div></div></div></div><div><div>IMGIZ</div><div>GCK <span>4</span></div></div><div><div>GCK</div><div><span>0.9</span></div></div><div><div>GCK VORTAC</div><div></div></div><div><div><div>3.02°</div><div>TCH 41</div></div><div><div>0.9</div><div>3.1 NM</div></div></div><div><div><div>164°</div><div>5000</div></div><div><div>344°</div><div>4200</div></div></div><div><div>Remain within 10 NM</div></div></div>					<div><div><div>5000</div><div>225°</div></div><div><div>5000</div></div></div>				
CATEGORY	A		B	C	D				
S-35	3200-½ 315 (400-½)		3200-¾ 315 (400-¾)	3200-1 315 (400-1)					
 CIRCLING	3320-1 429 (500-1)	3360-1 469 (500-1)	3480-1½ 589 (600-1½)	3480-2 589 (600-2)					