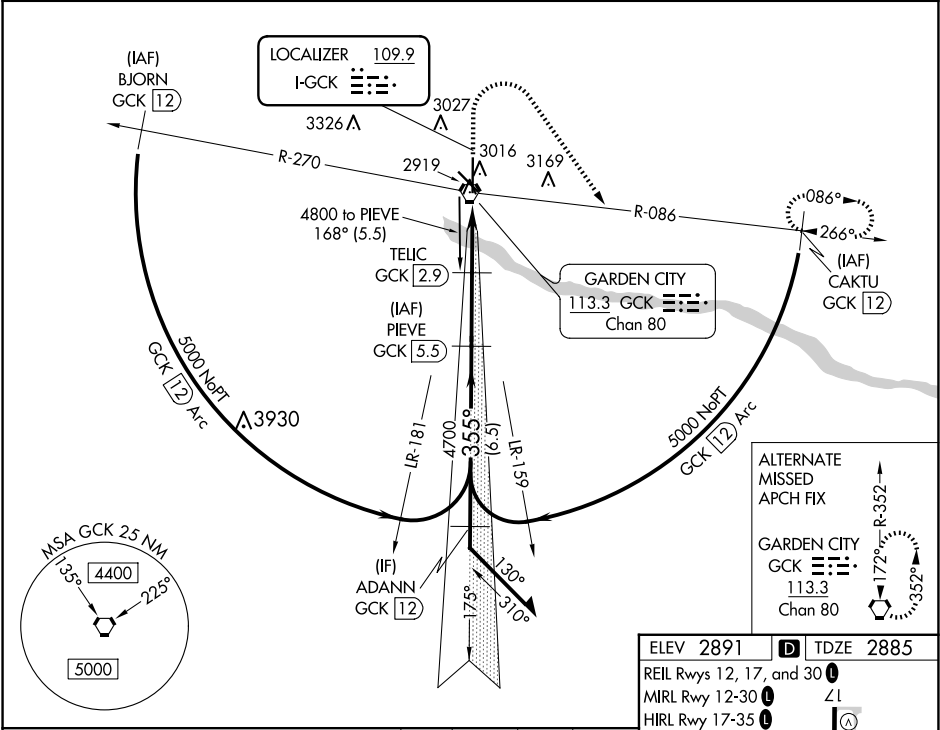


LOC I-GCK <b>109.9</b>	APP CRS <b>355°</b>	Rwy Idg TDZE Apt Elev	<b>7299</b> <b>2885</b> <b>2891</b>
---------------------------	------------------------	-----------------------------	---

ILS or LOC RWY 35  
GARDEN CITY RGNL (GCK)

DME required. ▼ For inop ALS, increase S-LOC 35 Cats C/D visibility to 7/8 SM. ▲		MALSR 	MISSED APPROACH: Climb to 4000 then climbing right turn to 5000 on GCK VORTAC R-086 to CAKTU/GCK VORTAC 12 DME and hold.	
ASOS <b>121.325</b>	KANSAS CITY CENTER <b>125.2 285.425</b>	GARDEN CITY TOWER* <b>118.15 (CTAF) 0 254.4</b>	GND CON <b>119.0 254.4</b>	UNICOM <b>122.95</b>



VGSI and ILS glidepath not coincident (VGSI Angle 3.00/TCH 41).		PIEVE GCK 5.5		<div><div>4000</div><div>↑</div></div> <div><div>5000</div><div>↷</div></div> <div>GCK R-086</div>		CAKTU GCK 12
Remain within 10 NM		175°		4700		TELIC GCK 2.9
4800		355°		4700		GCK 0.8
GS 3.00° TCH 59		4700		3860		GCK 0.1
		2.6 NM		2.1 NM		0.8
CATEGORY	A	B	C	D		
S-ILS 35	3085-½ 200 (200-½)					
S-LOC 35	3180-½ 295 (300-½)					
CIRCLING	3320-1 429 (500-1)	3360-1 469 (500-1)	3480-1½ 589 (600-1½)	3480-2 589 (600-2)		

