

TACAN RWY 21L

TACAN SUU Chan 113	APCH CRS 213°	Rwy Idg 10,995 TDZE 58 Arpt Elev 63
------------------------------	-------------------------	--

[USAF]

TRAVIS AFB (KSUU)

⚠ * When ALS inop, increase CAT AB RVR to 55, vis to 1 mile, CAT CDE vis to 1½ miles.
** Circling not authorized NW of Rwy 3L-21R.

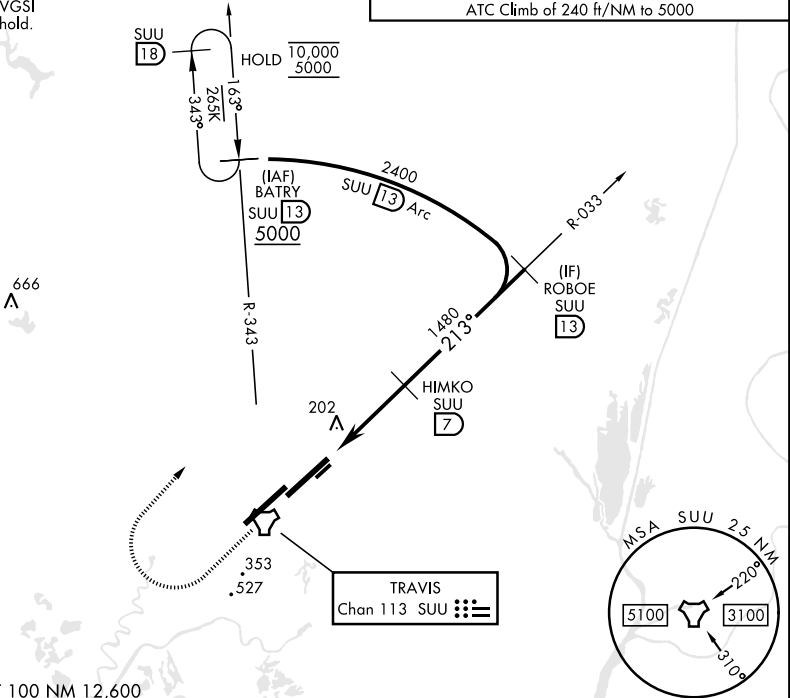


MISSED APPROACH: Climb to 2300 then climbing right turn to 5000 on heading 028° and SUU TACAN R-343 to BATRY/13 DME and hold.

ATIS 135.55 292.125	APP CON 119.9 322.325 (S) 126.6 281.45 (N)	TOWER 120.75 254.4	GND CON 121.8 289.4	CLNC DEL 127.55 335.8
-------------------------------	--	------------------------------	-------------------------------	---------------------------------

When circling to Rwy 3L at night, operational VGSI required, remain at or above VGSI glidepath until threshold.

Knots	60	120	180	240	300	360
V/V(fpm)	240	480	720	960	1200	1440
ATC Climb of 240 ft/NM to 5000						



EMERG SAFE ALT 100 NM 12,600

2300

5000

↑

hdg 028°

SUU R-343

SUU **13**

VGSI and descent angles not coincident (VGSI Angle 2.80/TCH 75).

SUU TACAN

SUU **4.4**

AMNOT SUU **3.6**

HIMKO SUU **7**

ROBOE SUU **13**

213°

2400

1480

3.30°

TCH 60

0.5

3.4 NM

CATEGORY	A	B	C	D	E
S-21L*	500/24 442 (500-½)		500/45 442 (500-¾)		
CIRCLING**	560-1 497 (500-1)	660-1 597 (600-1)	840-2¼ 777 (800-2¼)	1200-3 1137 (1200-3)	

ELEV 63

TDZE 58

TWR

3500 x 20

10,995 x 150

032° 212°

213°

ASUALT STRIP

HIRL Rwy 3R-21L
MIRL Rwy 032° - 212°
TDZL/CL Rwy 3R, 21L

FAIRFIELD, CALIFORNIA

38°16'N-121°55'W

TRAVIS AFB (KSUU)

Amtd 1 07AUG25

TACAN RWY 21L

SW-2, 07 AUG 2025 to 04 SEP 2025

SW-2, 07 AUG 2025 to 04 SEP 2025