

ILS RWY 21L (CAT II)

LOC I-SUU 110.1	APCH CRS 215°	Rwy Idg TDZE Arprt Elev 10,995 58 63
---------------------------	-------------------------	--

[USAF]

TRAVIS AFB (KSUU)

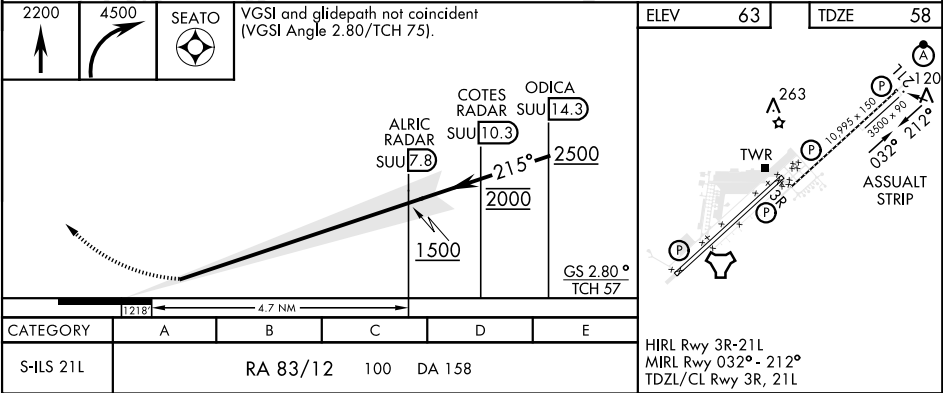
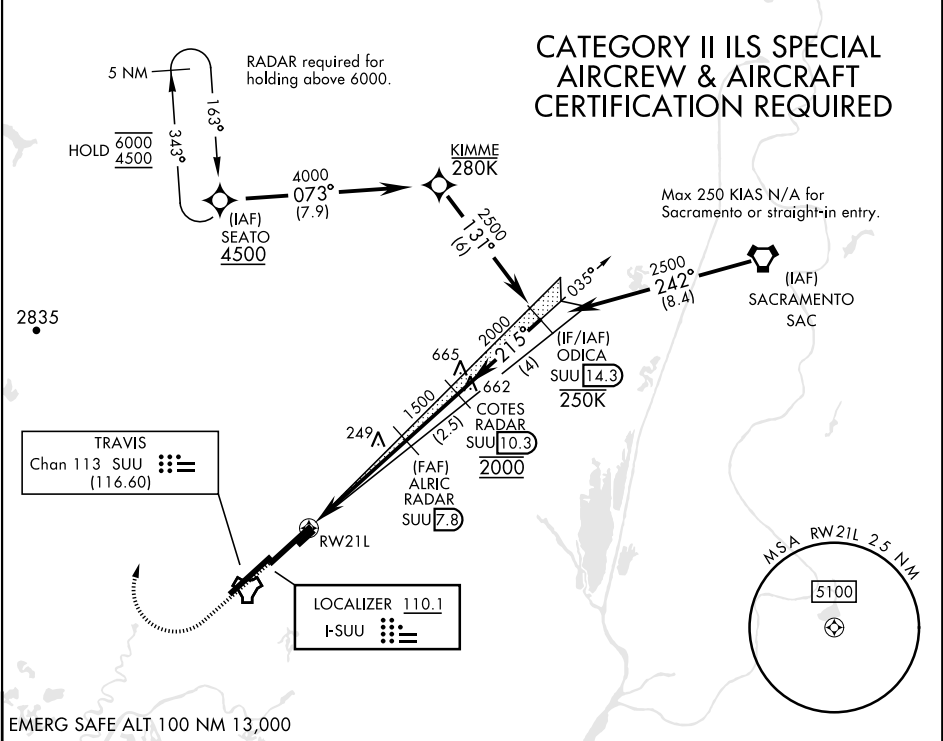
RNAV1 - GPS or RADAR required.

RADAR required for CAT E aircraft for full procedure off of SEATO.

ALSIF-2

MISSED APPROACH: Climb to 2200 then climbing right turn to 4500 direct SEATO and hold, continue climb in hold to 4500.

ATIS 135.55 292.125	APP CON 119.9 322.325 (S) 126.6 281.45 (N)	TOWER 120.75 254.4	GND CON 121.8 289.4	CLNC DEL 127.55 335.8
-------------------------------	--	------------------------------	-------------------------------	---------------------------------



ILS RWY 21L (CAT II)

SW-2, 07 AUG 2025 to 04 SEP 2025

SW-2, 07 AUG 2025 to 04 SEP 2025