

BESSA TWO DEPARTURE (RNAV) (BESSA2.BESSA)

TRAVIS AFB (KSUU)

FAIRFIELD, CALIFORNIA

Rwy	Knots	60	120	180	240	300	360
*3R	⊙ V/V(fpm)	201	402	603	804	1005	1206
†3R	⊙ V/V(fpm)	295	590	885	1180	1475	1770
†3L	⊙ V/V(fpm)	299	598	897	1196	1495	1794
*21L/R	⊙ V/V(fpm)	220	440	660	880	1100	1320
*21R	⊙ V/V(fpm)	277	554	831	1108	1385	1662
†21L	⊙ V/V(fpm)	280	560	840	1120	1400	1680

* Minimum † ATC Climb Rate

@ to 500

⑥ to BESSA to 8000

© to 4000

[USAF]

	DEPARTURE ROUTE DESCRIPTION
1	100% FUEL
2	95% FUEL
3	90% FUEL
4	85% FUEL
5	80% FUEL
6	75% FUEL
7	70% FUEL
8	65% FUEL
9	60% FUEL
10	55% FUEL
11	50% FUEL
12	45% FUEL
13	40% FUEL
14	35% FUEL
15	30% FUEL
16	25% FUEL
17	20% FUEL
18	15% FUEL
19	10% FUEL
20	5% FUEL
21	0% FUEL

TAKEOFF RWY 3L/R: Climb on heading 035° to 1500, then left turn direct to cross BESSA at or above 8000. Thence...

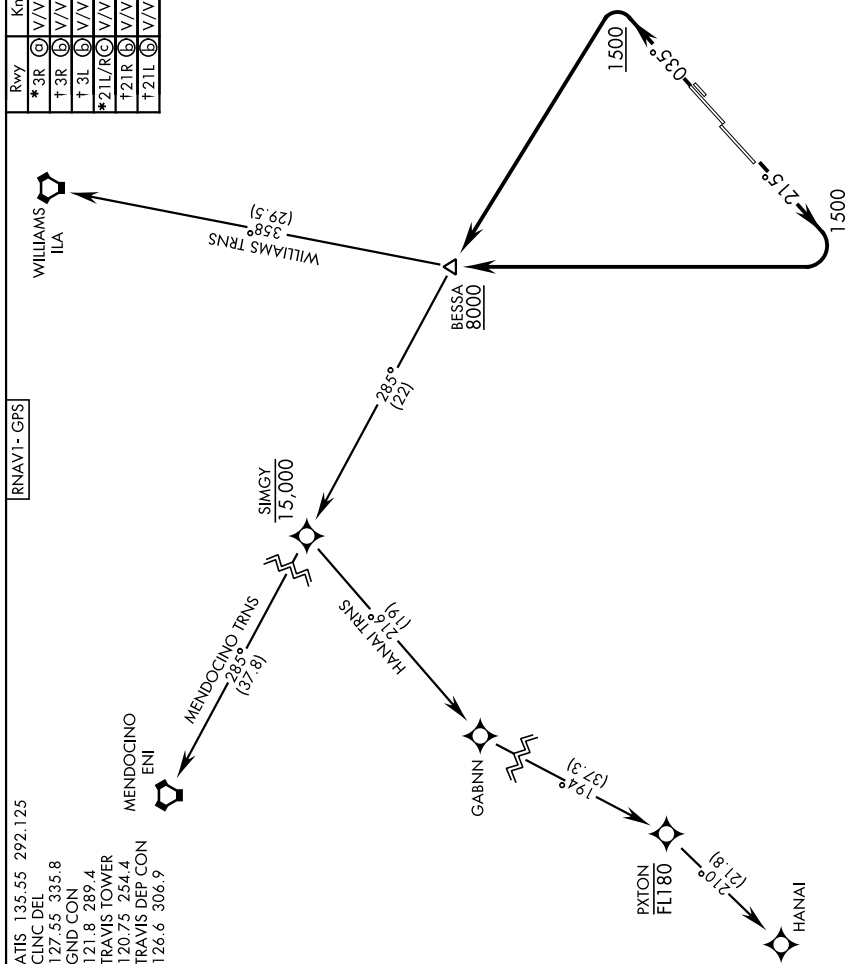
TAKEOFF RWY 21L/R: Climb on heading 215° to 1500, then right turn direct to cross BESSA at or above 8000. Thence...

...via assigned transition. Maintain ATC assigned altitude.

HANA1 TRANSITION (BESSA2.HANA1)

MENDOCINO TRANSITION (BESSA2.ENI)

WILLIAMS TRANSITION (BESSA2.ILA)



BESSA TWO DEPARTURE (RNAV) (BESSA2.BESSA)

Orig 11JUL24

FAIRFIELD, CALIFORNIA

TRAVIS AFB (KSUU)