

TACAN LDK Chan <b>125</b> <b>(117.8)</b>	APP CRS <b>241°</b>	Rwy Ldg TDZE <b>164</b> Apt Elev <b>170</b>
--	------------------------	---

TACAN RWY 22

TUSCALOOSA NTL (TCL)

▼

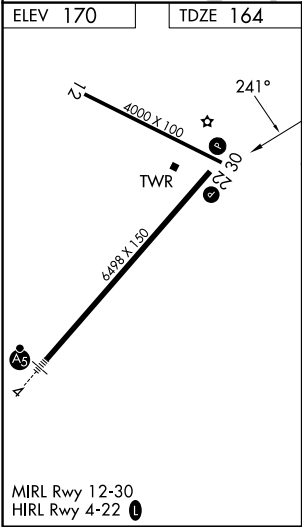
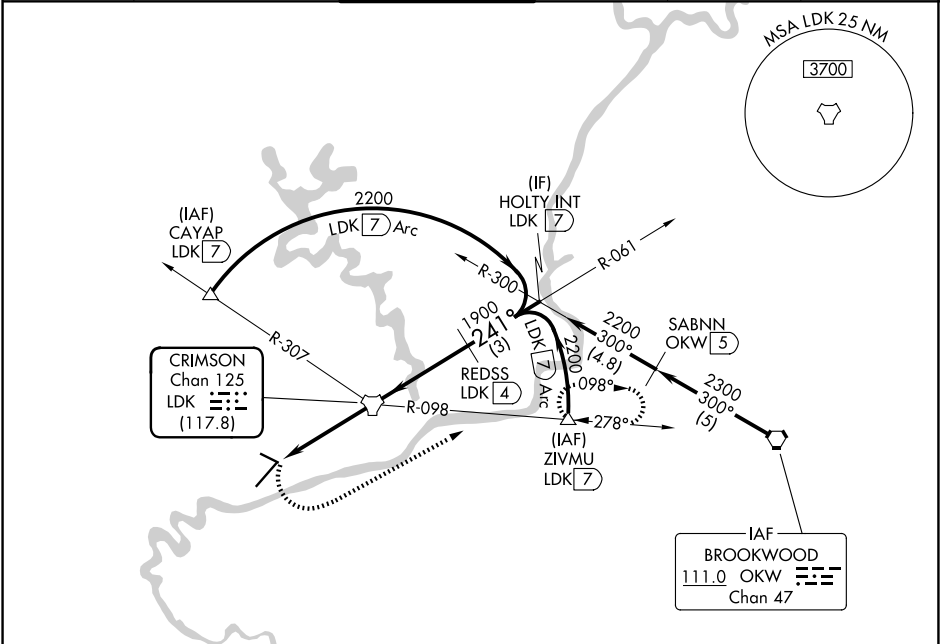
▲

Circling Rwy 12, 30 NA at night.

Rwy 22 helicopter visibility reduction below ¾ SM NA.

MISSED APPROACH: Climbing left turn to 2300 on heading 060° and LDK TACAN R-098 to ZIVMU/LDK 7 DME and hold.

ASOS <b>132.825</b>	BIRMINGHAM APP CON <b>120.15 269.25</b>	TUSCALOOSA TOWER ★ <b>126.3(CTAF) 0 256.7</b>	GND CON <b>121.8 257.95</b>	CLNC DEL <b>120.775</b>	UNICOM <b>122.95</b>
------------------------	--	--	--------------------------------	----------------------------	-------------------------



2300	LDK R-098	ZIVMU	LDK TACAN	REDSS LDK 4	HOLTY INT LDK 7	2200
hdg 060°						
	LDK 4	LDK 2.2	LDK 2.2	LDK 2.2	LDK 2.2	LDK 2.2
	1.8 NM	2.2 NM	4 NM	3 NM		
CATEGORY	A	B	C	D		
S-22	800-1	636 (700-1)	800-1¾	636 (700-1¾)		
CIRCLING	800-1	630 (700-1)	960-2¼ 790 (800-2¼)	960-2½ 790 (800-2½)		

SE-4, 07 AUG 2025 to 04 SEP 2025

SE-4, 07 AUG 2025 to 04 SEP 2025