

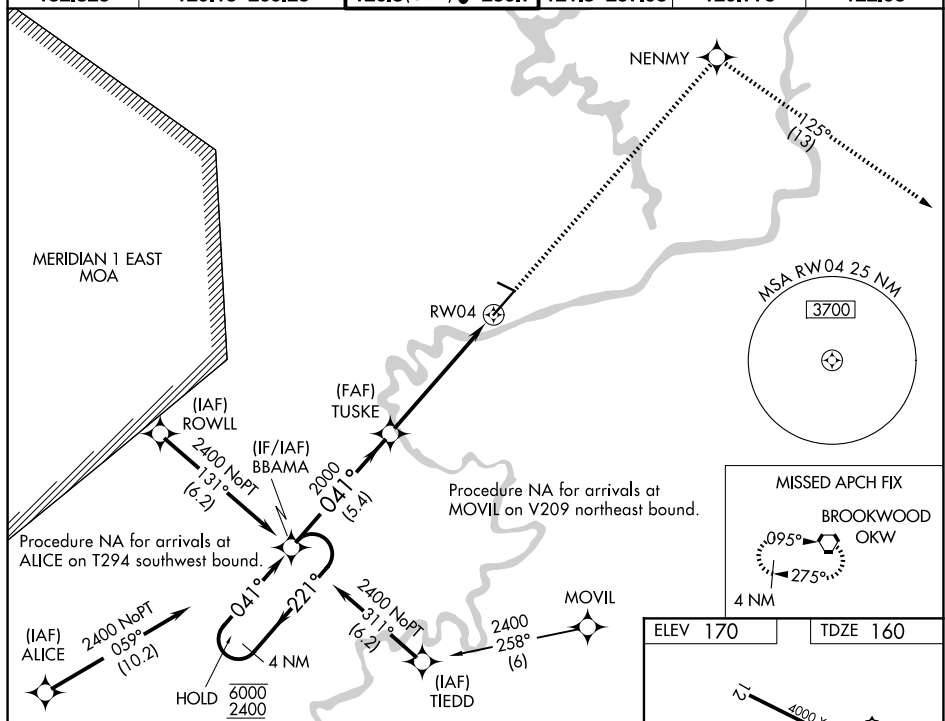
25219

RNAV (GPS) RWY 4  
TUSCALOOSA NTL(TCL)

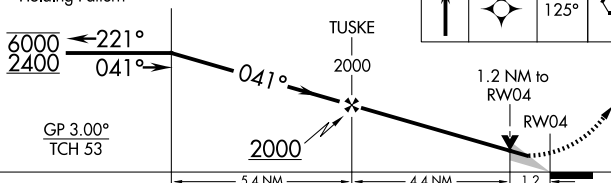
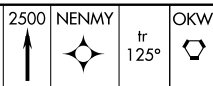
**T** Circling Rwy 12, 30 NA at night. For uncompensated Baro-VNAV systems, LNAV/VNAV NA below -7°C or above 54°C. For inop ALS, **A** increase LNAV/VNAV all Cats visibility to 1½ SM.



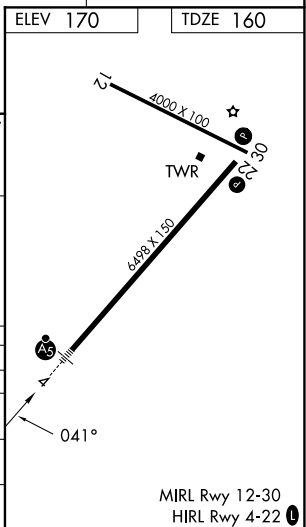
**MISSED APPROACH:** Climb to 2500 direct NENMY and on track 125° to OKW VORTAC and hold.

UNICOM  
122.95

4 NM  
Holding Pattern BBAMA



CATEGORY	A	B	C	D
LPV DA	360- $\frac{1}{2}$		200 (200- $\frac{1}{2}$ )	
LNAV/ VNAV DA	575- $\frac{3}{4}$		415 (500- $\frac{3}{4}$ )	
LNAV MDA	600- $\frac{1}{2}$ 440 (500- $\frac{1}{2}$ )		600- $\frac{3}{4}$ 440 (500- $\frac{3}{4}$ )	
CIRCLING	720-1 550 (600-1)	800-1 630 (700-1)	960-2 $\frac{1}{4}$ 790 (800-2 $\frac{1}{4}$ )	960-2 $\frac{1}{2}$ 790 (800-2 $\frac{1}{2}$ )

TUSCALOOSA NTL (TCL)  
RNAV (GPS) RWY 4

SE-4, 07 AUG 2025 to 04 SEP 2025

SE-4, 07 AUG 2025 to 04 SEP 2025