

APP CRS	Rwy Ldg	4000
297°	TDZE	170
	Apt Elev	170

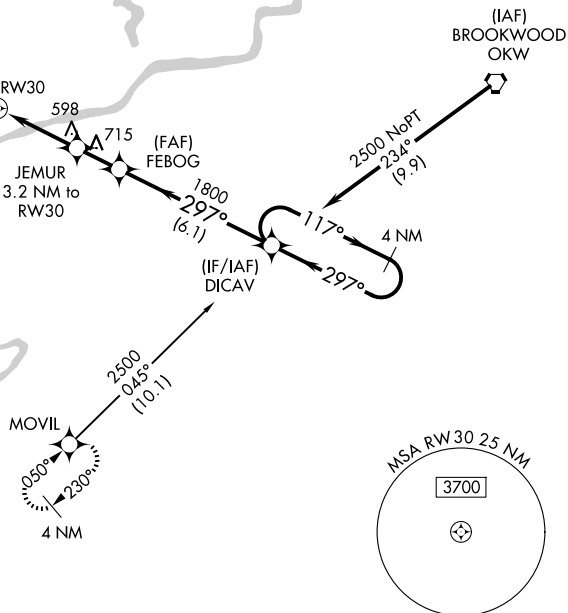
RNAV (GPS) RWY 30
TUSCALOOSA NTL (TCL)

T DME/DME RNP-0.3 NA. Helicopter visibility reduction below 1 SM NA. When local altimeter setting not received, use Birmingham altimeter setting: increase all MDAs 180 feet and visibility INAV Cats A and B $\frac{1}{2}$ SM, Cat C and D $\frac{1}{2}$ SM, and Circling Cat C $\frac{3}{4}$ SM, Cat D $\frac{1}{2}$ SM. Circling Rwy 12, 30 NA at night.

MISSED APPROACH: Climbing left turn to 3000 direct MOVIL and hold.

ASOS 132.825	BIRMINGHAM APP CON 120.15 269.25	TUSCALOOSA TOWER ★ 126.3(CTAF) 0 256.7	GND CON 121.8 257.95	CLNC DEL 120.775	UNICOM 122.95
-----------------	-------------------------------------	---	-------------------------	---------------------	------------------

Procedure NA for arrivals
at OKW VORTAC on V66
eastbound.



Visual Segment - Obstacles.

3000 MOVIL

JEMUR 3.2 NM to RW30

FEBOG

DICAV

4 NM Holding Pattern

117°

297°

2500

RW30

1240

1800

3.2 NM

1.7 NM

6.1 NM

CATEGORY	A	B	C	D
LNNAV MDA	900-1	730 (800-1)	900-2	730 (800-2)
CIRCLING	900-1	730 (800-1)	960-2¼ 790 (800-2¼)	960-2½ 790 (800-2½)