

WAAS CH 99337 W32A	APP CRS 319°	Rwy Ldg TDZE 3851 Apt Elev 3858
--	------------------------	---

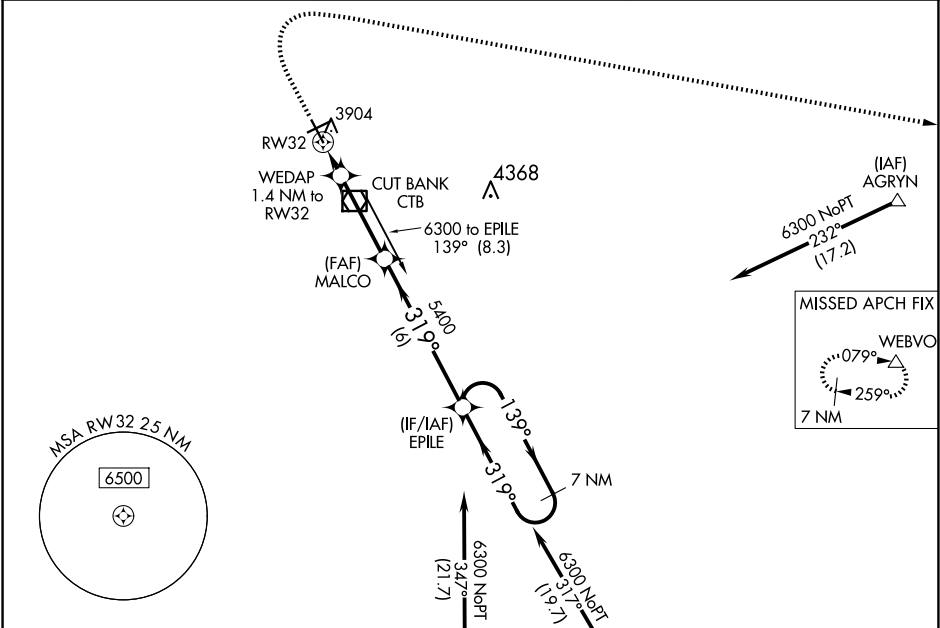
RNAV (GPS) RWY 32

CUT BANK INTL (CTB)

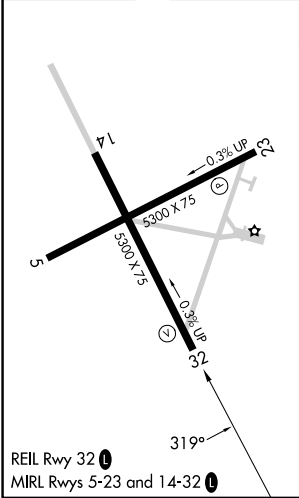
For uncompensated Baro-VNAV systems, LNAV/VNAV
NA below -25°C (-13°F) or above 51°C (124°F).
DME/DME RNP-0.3 NA.

MISSED APPROACH: Climb to 4400 then
climbing right turn to 11000 direct WEBVO
and hold.

ASOS 119.025	SALT LAKE CITY CENTER 133.4 285.4	UNICOM 123.0 (CTAF) 0
------------------------	---	---------------------------------



ELEV 3858	TDZE 3851
-----------	-----------



4400 ↑	11000 ↗	WEBVO △	VGSI and RNAV glidepath not coincident (VGSI Angle 3.00/TCH 42).			7 NM Holding Pattern
*LNAV only		WEDAP 1.4 NM to RW32	MALCO 5400	EPILE	139° ←319°	6300
0.8 NM to RW32		4320	5400	GP 3.00° TCH 53		
-0.8 NM-0.6 NM		3.3 NM	6 NM			
CATEGORY	A	B	C	D		
LPV DA	4051-1		200 (200-1)			
LNAV/ VNAV	4101-1		250 (300-1)			
LNAV MDA	4160-1		309 (400-1)			
CIRCLING	4280-1 422 (500-1)	4320-1 462 (500-1)	4400-1½ 542 (600-1½)	4620-2½ 762 (800-2½)		