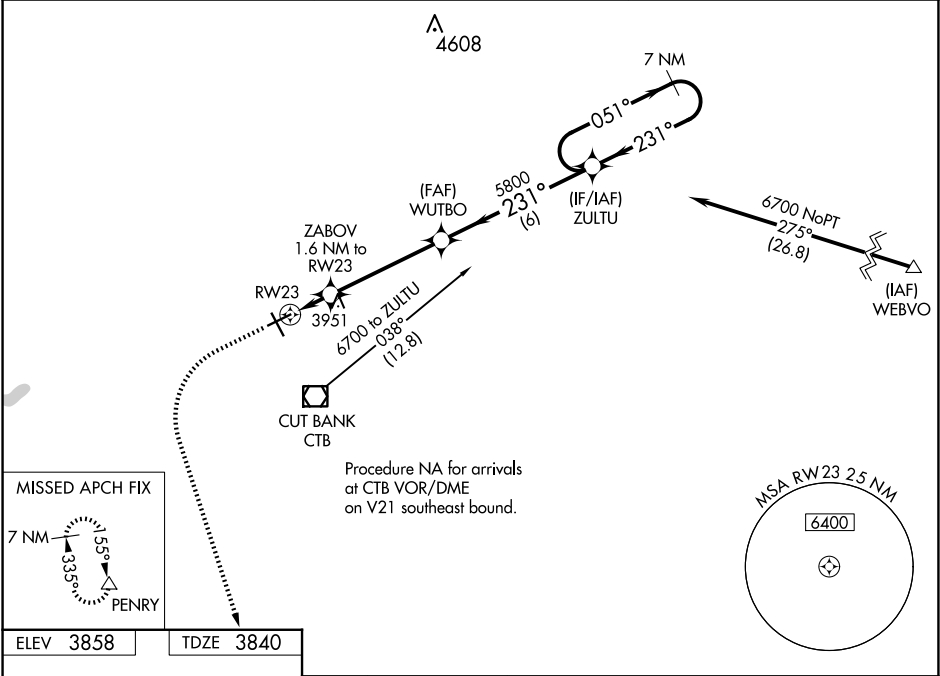


WAAS CH <b>53337</b> <b>W23A</b>	APP CRS <b>231°</b>	Rwy Ldg TDZE Apt Elev <b>5300</b> <b>3840</b> <b>3858</b>
--	------------------------	--

RNAV (GPS) RWY 23  
CUT BANK INTL (CTB)

<p><b>▽</b> For uncompensated Baro-VNAV systems, LNAV/VNAV NA below -25°C (-13°F) or above 51°C (124°F). <b>⚠</b> -28°C DME/DME RNP-0.3 NA.</p>	<p>MISSED APPROACH: Climb to 4400 then climbing left turn to 9000 direct PENRY and hold.</p>
---	--

ASOS <b>119.025</b>	SALT LAKE CITY CENTER <b>133.4 285.4</b>	UNICOM <b>123.0 (CTAF) 0</b>
------------------------	---	---------------------------------



REIL Rwy 32

MRL Rwy 5-23 and 14-32

4400

↑

9000

↶

PENRY

△

VGSI and RNAV glidepath not coincident (VGSI Angle 3.00/TCH 39).

WUTBO

5800

ZULTU

7 NM Holding pattern

321°

0.3% UP

5300 X 75

5

32

231°

0.3% UP

5300 X 75

32

\*LNAV only.

RW23

1.1 NM

ZABOV

1.6 NM to RW23

\*1.1 NM to RW23

4400\*

1.1 NM

0.5

4.4 NM

6 NM

GP 3.00° TCH 52

051° → 6700

← 231°

CATEGORY	A	B	C	D
LPV DA	4040-1 200 (200-1)			
LNAV/VNAV DA	4090-1 250 (300-1)			
LNAV MDA	4220-1 380 (400-1)			
<b>CIRCLING</b>	4280-1 422 (500-1)	4320-1 462 (500-1)	4400-1½ 542 (600-1½)	4620-2½ 762 (800-2½)